

TECHNICAL MANUAL
DIRECT SUPPORT AND GENERAL
SUPPORT MAINTENANCE REPAIR
PARTS AND SPECIAL TOOLS LISTS
(INCLUDING DEPOT MAINTENANCE REPAIR
PARTS AND SPECIAL TOOLS)
FOR
POWER SUPPLIES PP-4763/GRC
(NSN 5820-00-937-7690)
AND
PP-4763A/GRC (NSN 5820-00-113-9768)

TECHNICAL MANUAL }
 No. 11-5820-765-34P-1 }

HEADQUARTERS,
 DEPARTMENT OF THE ARMY
 WASHINGTON, DC, 5 MARCH 1985

**DIRECT SUPPORT AND GENERAL SUPPORT MAINTENANCE
 REPAIR PARTS AND SPECIAL TOOLS LISTS
 (INCLUDING DEPOT MAINTENANCE REPAIR PARTS AND SPECIAL TOOLS
 FOR
 POWER SUPPLIES PP-4763/GRC
 (NSN 5820-00-937-7690)
 AND
 PP-4763A/GRC (NSN 5820-00-113-9768)**

Current as of 9 October 1984

REPORTING ERRORS AND RECOMMENDING IMPROVEMENTS

You can help improve this manual. If you find any mistakes or if you know of a way to improve the procedures, please let us know. Mail your letter, DA Form 2028 (Recommended Changes to Publications and Blank Forms), or DA Form 2028-2 located in the back of this manual direct to Commander, US Army Communications-Electronics Command and Fort Monmouth, ATTN: AM-SEL-ME-MP, Fort Monmouth, NJ 07703-5007.

In either case, a reply will be furnished direct to you.

Table of Contents

	Page	Illus Figure
SECTION I. Introduction	1	
GROUP II. Repair Parts List	1-1	
00 Power Supply PP-4763/GRC and PP-4763A/GRC, Controls and Connections	1-1	1
Power Supply PP-4763/GRC and PP-4763/GRC, Parts Location	2-1	2
Power Supply PP-4763/GRC and PP-4763A/GRC, Cover Assembly	3-1	3
Power Supply PP-4763/GRC and PP-4763A/GRC, Frame and Switch Assembly	4-1	4
Power Supply PP-4763/GRC and PP-4763A/GRC, Front Panel Assembly	5-1	5
Power Supply PP-4763/GRC and PP-4763A/GRC, Left Panel Assembly	6-1	6
Power Supply PP-4763/GRC and PP-4763A/GRC, Left Panel Subassembly	7-1	7
Power Supply PP-4763/GRC and PP-4763A/GRC, Rear Panel Internal View	8-1	8
Power Supply PP-4763/GRC and PP-4763A/GRC, Rear Panel Subassemblies	9-1	9
Power Supply PP-4763/GRC and PP-4763A/GRC, Right Panel, Internal View	10-1	10
Power Supply PP-4763/GRC and PP-4763A/GRC, Transformer Frame Assembly	11-1	11
Power Supply PP-4763/GRC and PP-4763A/GRC, Transformer Frame Subassemblies	12-1	12
Power Supply PP-4763/GRC and PP-4763A/GRC, Transformer and Terminal Board Assembly	13-1	13
01 Circuit Card Assembly (PC101) (PP-4763/GRC)	14-1	14
Circuit Card Assembly (A1) (PP-4763A/GRC)	15-1	15
SECTION III. Special Tools List (Not applicable)		
IV. National Stock Number and Part Number Index	I-1	

SECTION I

INTRODUCTION

1. Scope

This manual lists and authorizes spares and repair parts; special tools; special test, measurement, and diagnostic equipment (TMDE); and other Special support equipment required for performance of organizational, direct support and general support maintenance of the PP-4763/GRC. It authorizes the requisitioning, issue, and disposition of spares, repair parts and special tools as indicated by the source, maintenance and recoverability (SMR) codes.

2. General

This Repair Parts and Special Tools List is divided into the following sections:

a. Section II. Repair Parts List. A list of spares and repair parts authorized by this RPSTL for use in the performance of maintenance. The list also includes parts which must be removed for replacement of the authorized parts. Parts lists are composed of functional groups in ascending numeric sequence, with the parts in each group listed in ascending item number sequence. Figure numbers are listed directly beneath the group header.

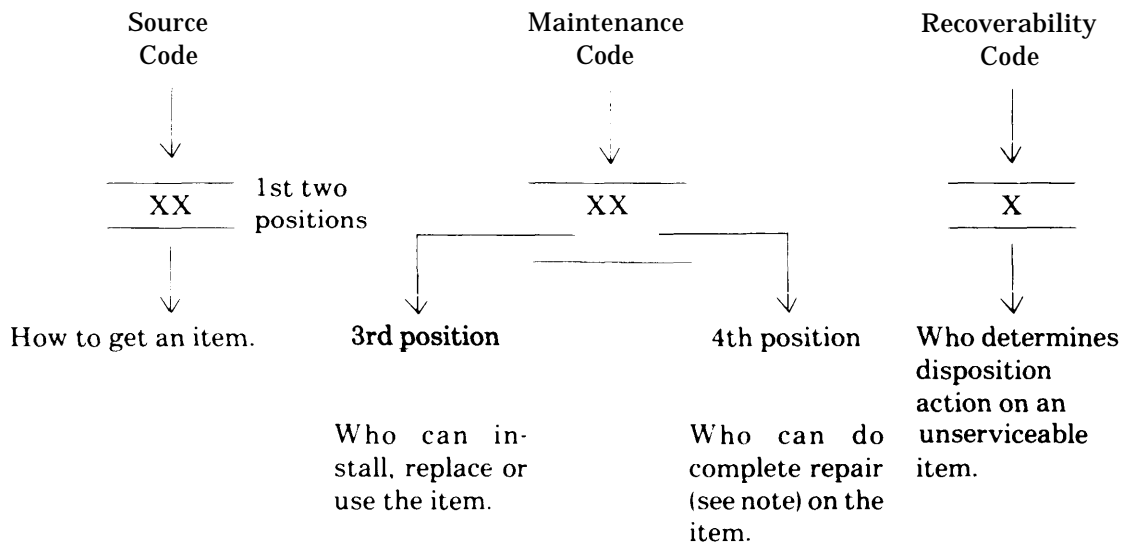
b. Section III. Special Tools List. Not applicable.

c. Section IV. National Stock Number and Part Number Index. A list, in National item identification number (NIIN) sequence, of all National stock numbered items appearing in the listing, followed by a list in alphameric sequence of all part numbers appearing in the listings. National stock numbers and part numbers are cross-referenced to each illustration figure and item number appearance.

3. Explanation of Columns (Section II and III)

a. Item No. (Column 1). Indicates the number used to identify items called out in the illustration.

b. SMR Code (Column 2). The source, maintenance, and recoverability y (SMR) code is a five-position code containing supply/requisitioning information, maintenance category authorization criteria, and disposition instruction, as shown in the following breakout:



NOTE

Complete repair: Maintenance capacity, capability, and authority to perform all corrective maintenance tasks of the "Repair" function in a use/user environment in order to restore serviceability to a failed item.

(1) *Source code.* The source code tells you how to get an item needed for maintenance, repair, or overhaul of an end item-equipment. Explanations of source codes follows:

<i>Code</i>	<i>Explanation</i>
PA PB PC PD PE PF PG	Stocked items; use the applicable NSN to request/requisition items with these source codes. They are authorized to the category indicated by the code entered in the third position of the SMR code.
	NOTE Items coded PC are subject to deterioration.
KD) KF KB	Items with these codes are not to be requested/requisitioned individually. They are part of a kit which is authorized to the maintenance category indicated in the third position of the SMR code. The complete kits must be requisitioned and applied.

MO- Made at org/
AVUM category
MF- Made at DS/
AVUM category
MH- Made at GS
category
ML-- Made at Spe-
cialized Re-
pair Activity
(SRA)
MD- Made at De-
pot

Items with these codes are not to be requested/requisitioned individually. They must be made from bulk material which is identified by the part number in the description and usable on code (UOC) column and listed in the Bulk Material group of the repair parts list. If the item is authorized to you by the third position code of the SMR code, but the source code indicates it is made at a higher category, order the item from the higher category of maintenance.

AO— Assembled
by org/
AVUM cate-
gory
AF— Assembled
by DS/
AVIM cate-
gory
AH— Assembled
by GS cate-
gory
AL - Assembled
by SRA
AD— Assembled
by Depot

Items with these codes are not to be requested/requisitioned individually. The parts that make up the assembled item must be requisitioned or fabricated and assembled at the category of maintenance indicated by the source code. If the disposition code of the SMR code authorizes you to replace the item, but the source code indicates the item is assembled at a higher category, order the item from the higher category of maintenance.

<i>Code</i>	<i>Explanation</i>
XA-	Do not requisition an "XA" coded item. Order its next higher assembly.
XB—	If an "XB" item is not available from salvage, order it using the FSCM and part number given.
XC—	Installation drawing, diagram, instruction sheet, field service drawing, that is identified by manufacturer's part number.
XD-	Item is not stocked. Order an "XD" coded item through normal supply channels using the FSCM and part number given, if no NSN is available.

NOTE

Cannibalization or controlled exchange, when authorized, may be used as a source of supply for items with the above source codes, except for those source coded "XA" or those aircraft support items restricted by requirements of AR 750-1.

(2) *Maintenance code.* Maintenance codes tell you the category of maintenance authorized to USE and REPAIR support items. The maintenance codes are entered in the third and fourth positions of the SMR code as follows:

(a) The maintenance code entered in the third position tells you the lowest maintenance category authorized to remove, replace, and use an item. The maintenance code entered in the third position will indicate authorization to one of the following categories of maintenance.

code	Application/Explanation
C—	Crew or operator maintenance done within organizational or aviation maintenance.
O—	Organizational or aviation unit category can remove, replace, and use the item.
F—	Direct support or aviation intermediate category can remove, replace, and use the item.
H—	General support category can remove, replace, and use the item.
L—	Specialized repair activity can remove, replace, and use the item.
D—	Depot category can remove, replace, and use the item.

(b) The maintenance code entered in the fourth position tells whether or not the item is to be repaired and identifies the lowest maintenance category with the capability to do complete repair (i.e., perform all authorized repair functions). This position will contain one of the following maintenance codes.

NOTE

Some limited repair may be done on the item at a lower category of maintenance, if authorized by the Maintenance Allocation Chart (MAC) and SMR codes.

Code	Application/Explanation
O—	Organizational or aviation unit is the lowest category that can do complete repair of the item.
F—	Direct support or aviation intermediate is the lowest category that can do complete repair of the item.
H—	General support is the lowest category that can do complete repair of the item.
L—	Specialized repair activity (designates the specialized repair activity) is the lowest category that can do complete repair of the item.
D—	Depot is the lowest category that can do complete repair of the item.
Z—	Nonreparable. No repair is authorized.
B—	No repair is authorized. (No parts or special tools are authorized for the maintenance of a "B" coded item).

However, the item may be reconditioned by adjusting, lubricating, etc., at the user category.

(3) *Recoverability code.* Recoverability codes are assigned to items to indicate the disposition action on unserviceable items. The recoverability y code is entered in the fifth position of the SMR Code as follows:

Recoverability codes	Application/Explanation
Z—	Nonreparable Item. When unserviceable, condemn and dispose of the item at the category of maintenance shown in the third position of SMR Code.
O—	Reparable item. When uneconomically repairable, condemn and dispose of the item at organizational or aviation unit category.
F—	Reparable item. When uneconomically repairable, condemn and dispose of the item at direct support or aviation intermediate category.
H—	Reparable item. When uneconomically repairable, condemn and dispose of the item at general support category.
D—	Reparable item. When beyond lower category repair capability, return to depot. Condemnation and disposal of item not authorized below depot category.
L—	Reparable item. Condemnation and disposal not authorized below specialized repair activity (SRA).

Recoverability
codes

Application/Explanation

A— Item requires special handling or condemnation procedures because of specific reasons (e.g., precious metal content, high dollar value, critical material, or hazardous material). Refer to appropriate manuals/directives for specific instructions.

c. *FSCM (Column (3))*. The Federal Supply Code for Manufacturer (FSCM) is a 5-digit numeric code which is used to identify the manufacturer, distributor, or Government agency, etc., that supplies the item.

d. *Part Number (Column (4))*. Indicates the primary number used by the manufacturer (individual, company, firm, corporation, or Government activity), which controls the design and characteristics of the item by means of its engineering drawings, specifications, standards, and inspection requirements to identify an item or range of items.

NOTE

When you use a NSN to requisition an item, the item you receive may have a different part number from the part ordered.

e. *Description and Usable on Code (UOC) (Column (5))*. This column includes the following information.

(1) The Federal item name and, when required, a minimum description to identify the item.

(2) Usable on code, when applicable (para 5).

(3) The statement “END OF FIGURE” appears just below the last item description in Column (5) for a given figure in both section II and section III.

f. *Qty (Column (6))*. Indicates the quantity of the item used in the breakout shown on the illustration figure, which is prepared for a functional group, subfunctional group, or an assembly. A “V” appearing in this column in lieu of a quantity indicates that the quantity is variable and the quantity may vary from application to application.

4. Explanation of Columns (Section IV)

a. *National Stock Number (NSN) Index*.

(1) *Stock number column*. This column lists the NSN by National item identification number (NIIN) sequence. The NIIN consists of the last nine digits of the NSN. When using this column to locate an item, ignore the first four digits of the NSN. When requisitioning items use the complete NSN (13 digits).

(2) *Fig. column*. This column lists the number of the figure where the item is identified/located. The illustrations are in numerical sequence in sections II and III.

(3) *Item column*. The item number identifies the item associated with the figure listed in the adjacent Fig. column. This item is also identified by the NSN listed on the same line.

b. *Part Number Index*. Part numbers in this index are listed by part number in ascending alphameric sequence.

(1) *FSCM column*. This column lists the Federal supply code for manufacturer (FSCM).

(2) *Part number column*. This column indicates the part number assigned to the item.

(3) *Stock number column*. This column lists the National stock number for the associated part number and manufacturer identified in the part number and FSCM columns to the left.

(4) *Fig. column*. This column lists the number of the figure where the item is identified/located in sections II and III.

(5) *Item column*. The item number is that number assigned to the item as it appears in the figure referenced in the adjacent figure number column.

5. Special Information

a. *Usable on Code*. The usable on code appears in the lower left corner of the description column heading. Usable on codes are shown as “UOC: “ in the description column (justified left) on the first line applicable item description nomenclature. Uncoded items are applicable to all models. Identification of the usable on codes used in this RPSTL are:

Code	Used on
3JQ	PP-4763/GRC
BB6	PP-4763A/GRC

b. *Associated Publications*. The publications listed below pertain to the PP-4763/GRC and its components: TM 11-5820-765-34P Power Supplies PP-4763/GRC and PP-4763A/GRC

c. National Stock Numbers. National stock numbers (NSN's) that are missing from P source coded items have been applied for and will be added to this TM by future change/revision when they are entered in the Army Master Data File (AMDF). Until the NSN'S are established and published, submit exception requisitions to: Commander, US Army Communications-Electronics Command and Fort Monmouth, ATTN: AMSEL-MM, Fort Monmouth, New Jersey 07703-5006 for the part required to support your equipment.

6. How to Locate Repair Parts

a. When National stock number or part number is not known.

(1) *First.* Using the table of contents, determine the assembly group or subassembly group to which the item belongs. This is necessary since figures are prepared for assembly groups and subassembly groups, and listings are divided into the same groups.

(2) *Second.* Find the figure covering the assembly group or subassembly group to which the item belongs.

(3) *Third.* Identify the item on the figure and note the item number.

(4) *Fourth.* Refer to the Repair Parts List for the figure to find the part number for the item number noted on the figure.

(5) *Fifth.* Refer to the Part Number Index to find the NSN, if assigned.

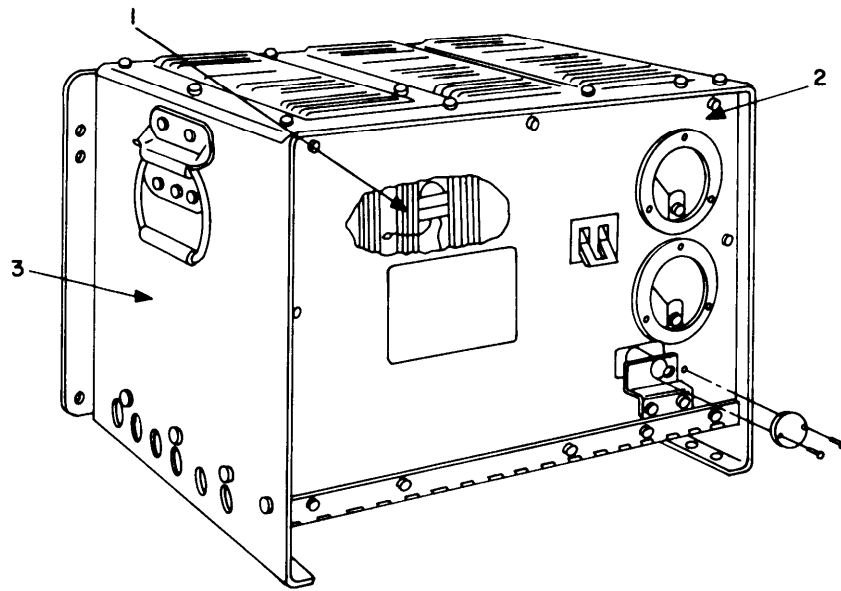
b. When National stock number or part number is known.

(1) *First.* Using the index of National stock numbers and part numbers, find the pertinent National stock number or part number. The NSN index is in National item identification number (NIIN) sequence (para 4a(1)). The part numbers in the part number index are listed in ascending alphameric sequence (para 4b). Both indexes cross-reference you to the illustration figure and item number of the item you are looking for.

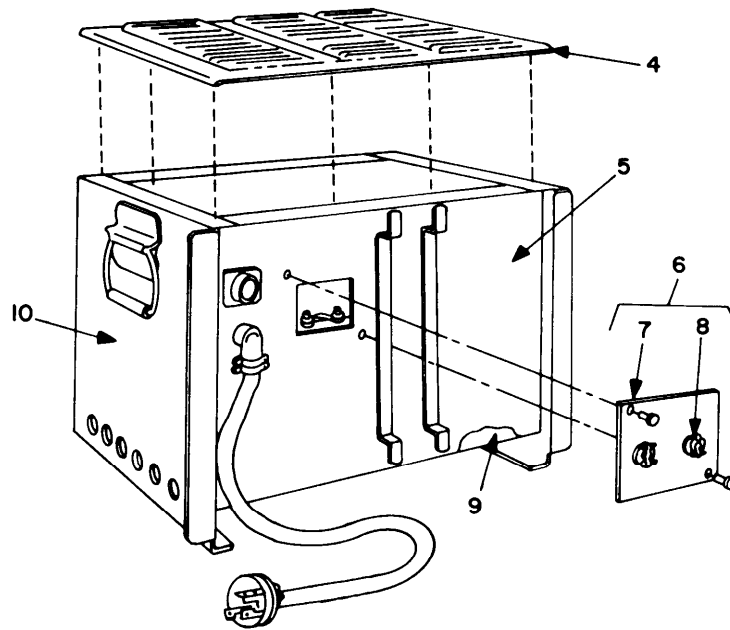
(2) *Second.* After finding the figure and item number, verify that the item is the one you're looking for, then locate the item number in the repair parts list for the figure.

7. Abbreviations

Not applicable.



FRONT VIEW



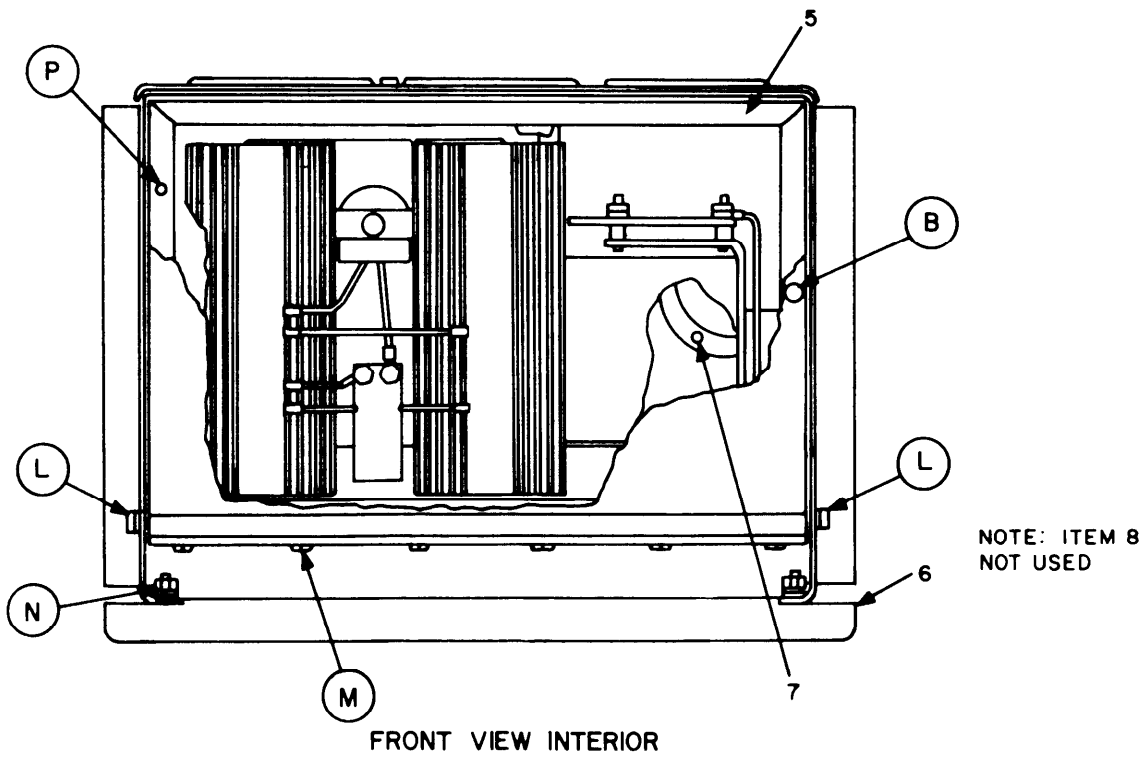
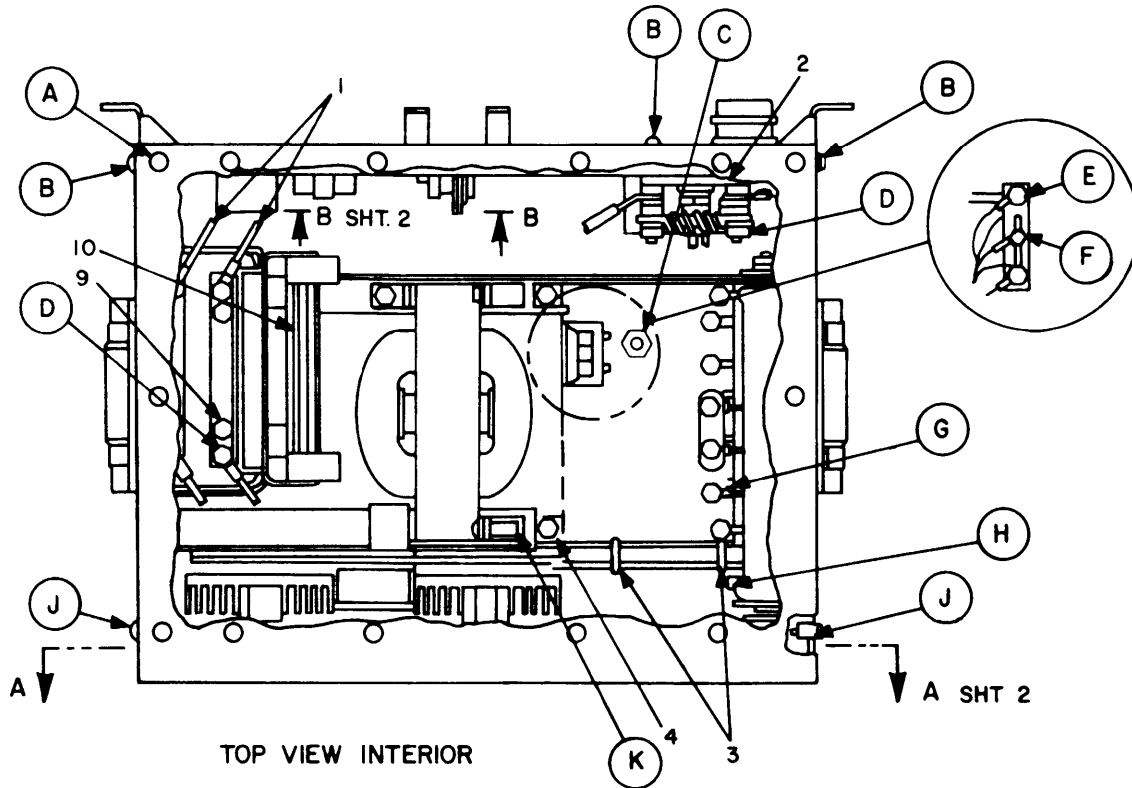
REAR VIEW

EL2XK022

Figure 1. Power supply PP-4763/GRC and PP-4763A/GRC, controls and connections.

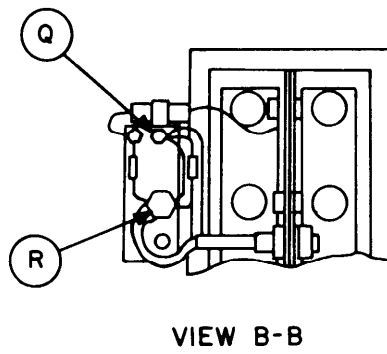
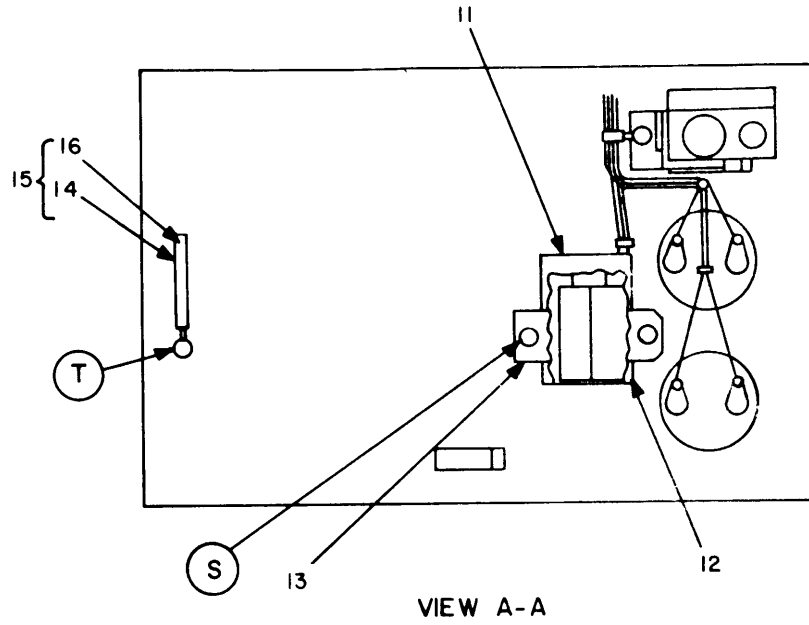
(1) ITEM NO	(2) SMR CODE	(3) FSCM	(4) PART NUMBER	(5) DESCRIPTION AND USABLE ON CODE (UOC)	(6) QTY
				GROUP 00 POWER SUPPLIES PP-4763/GRC PP-4736A/GRC CONTROLS AND CONNECTIONS	
				FIGURE 1	
1	XBHZZ	80063	SM-D-633308	TRANSFORMER-FRAME UOC:BB6	1
1	XBHHH	80063	SM-D-640022	TRANSFORMER-FRAME UOC:3JQ	1
2	XBHHH	80063	SM-D-633305	PANEL ASSEMBL UOC:BB6	1
2	XBHHH	80063	SM-D-640013	PANEL ASSEMBLY, UOC:3JQ	1
3	XBHHH	80063	SM-C-633307	PANEL ASSEMBLY,LEFT UOC:BB6	1
3	XBHHH	80063	SM-C-640018	PANEL ASSEMBLY,LEFT UOC:3JQ	1
4	XBHHH	80063	SM-C-640002	COVER ASSEMBLY	1
5	XBHHH	80063	SM-D-633301	PANEL ASSEMBLY,REAR UOC:BB6	1
5	XBHHH	80063	SM-D-640004	PANEL ASSEMBLY,REAR UOC:3JQ	1
6	XBHHH	80063	SM-B-640042	PLATE ASSY,DC OUT	1
7	XBHHH	80063	SM-C-640067	PLATE	1
8	XBHZZ	80063	SM-B-640177	CABLE CLAMP,MOD	2
9	XBHZZ	80063	SM-D-640157	BOTTOM	1
10	XBHHH	80063	SM-C-633306	PANEL ASSY,RIGHT UOC:BB6	1
10	XBHHH	80063	SM-C-640016	PANEL ASSEMBLY UOC:3JQ	1

END OF FIGURE



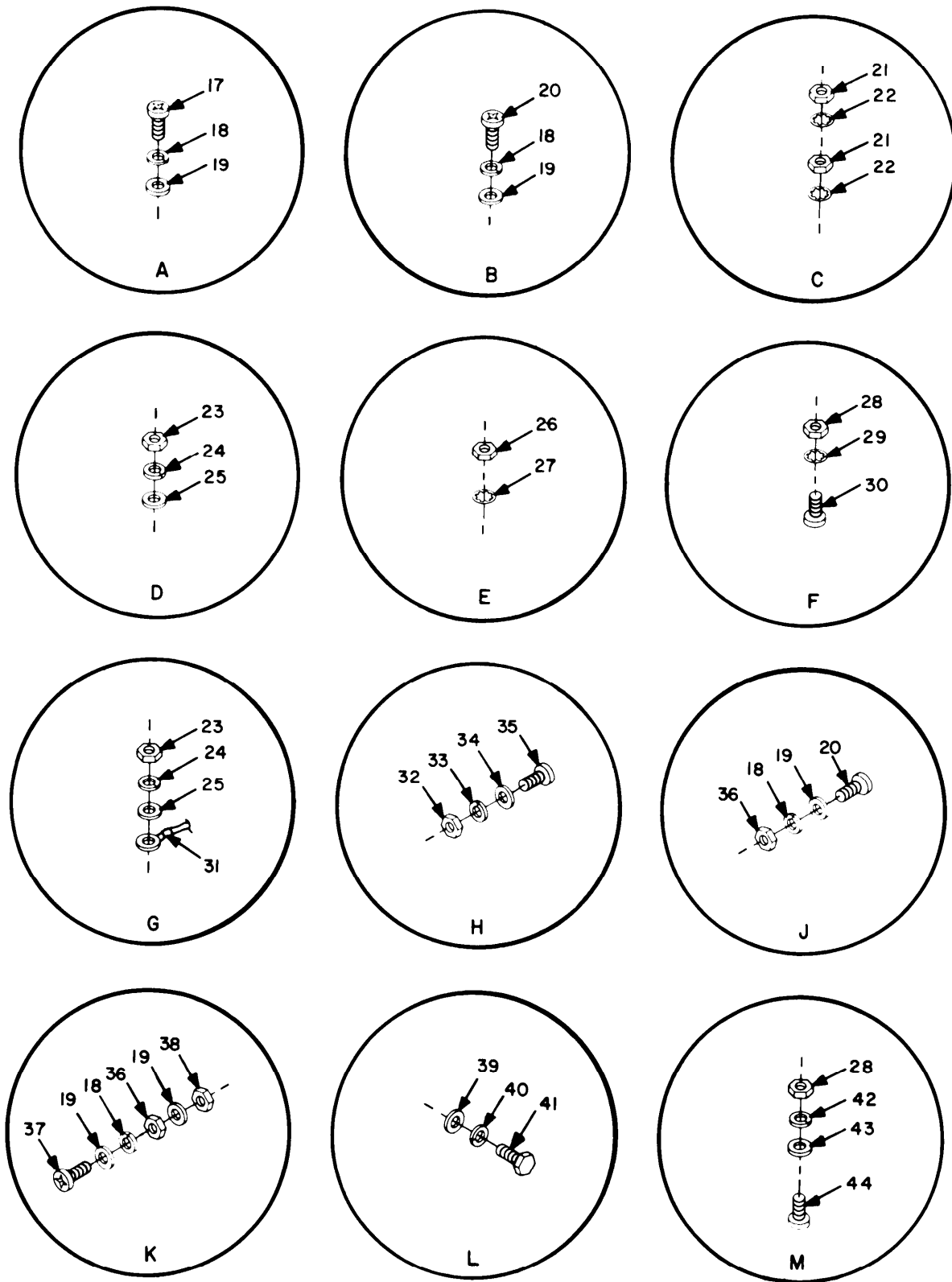
EL2XK023

Figure 2. Power supply PP-4763/GRC and PP-4763A/GRC, parts location (Sheet 1 of 4).



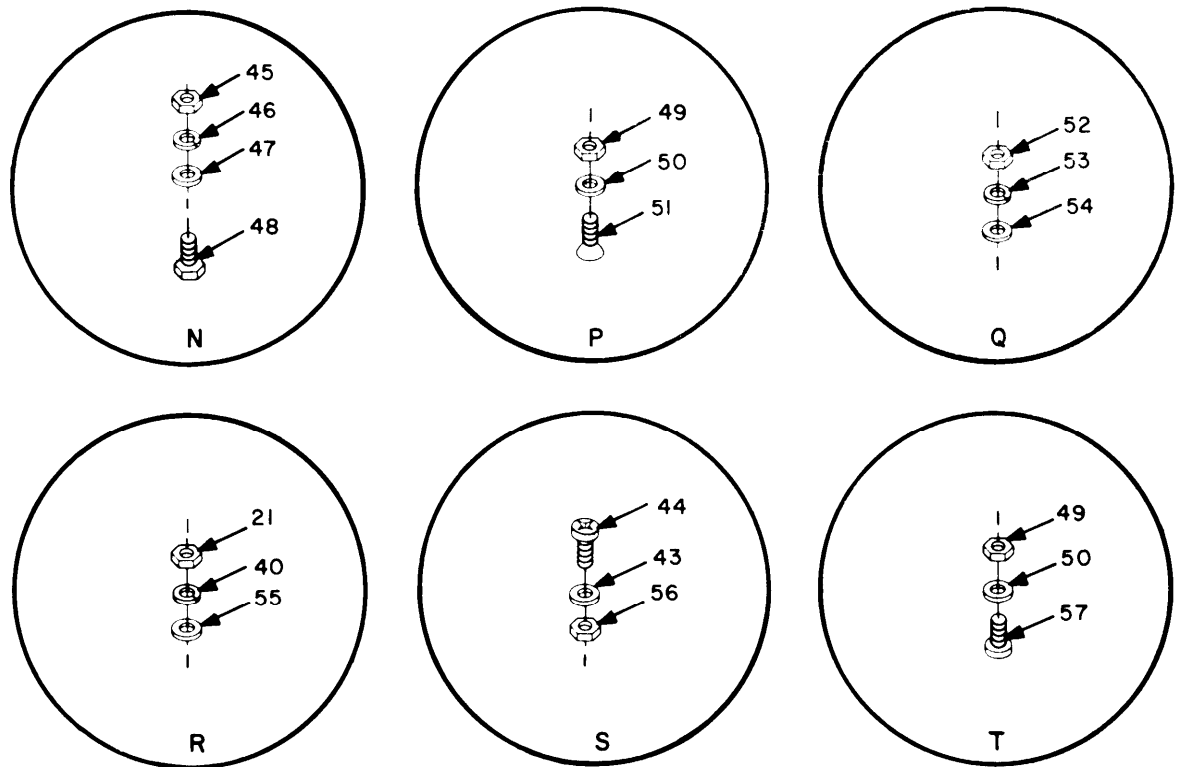
EL2XK024

Figure 2. Power supply PP-4763/GRC and PP-4763A/GRC, parts location (Sheet 2 of 4).



EL2XK025

Figure 2. Power supply PP-4763/GRC and PP-4763A/GRC, parts location (Sheet 3 of 4).



EL2XK026

Figure 2. Power supply PP-4763/GRC and PP-4763/GRC) parts location (Sheet 4 of 4).

SECTION II

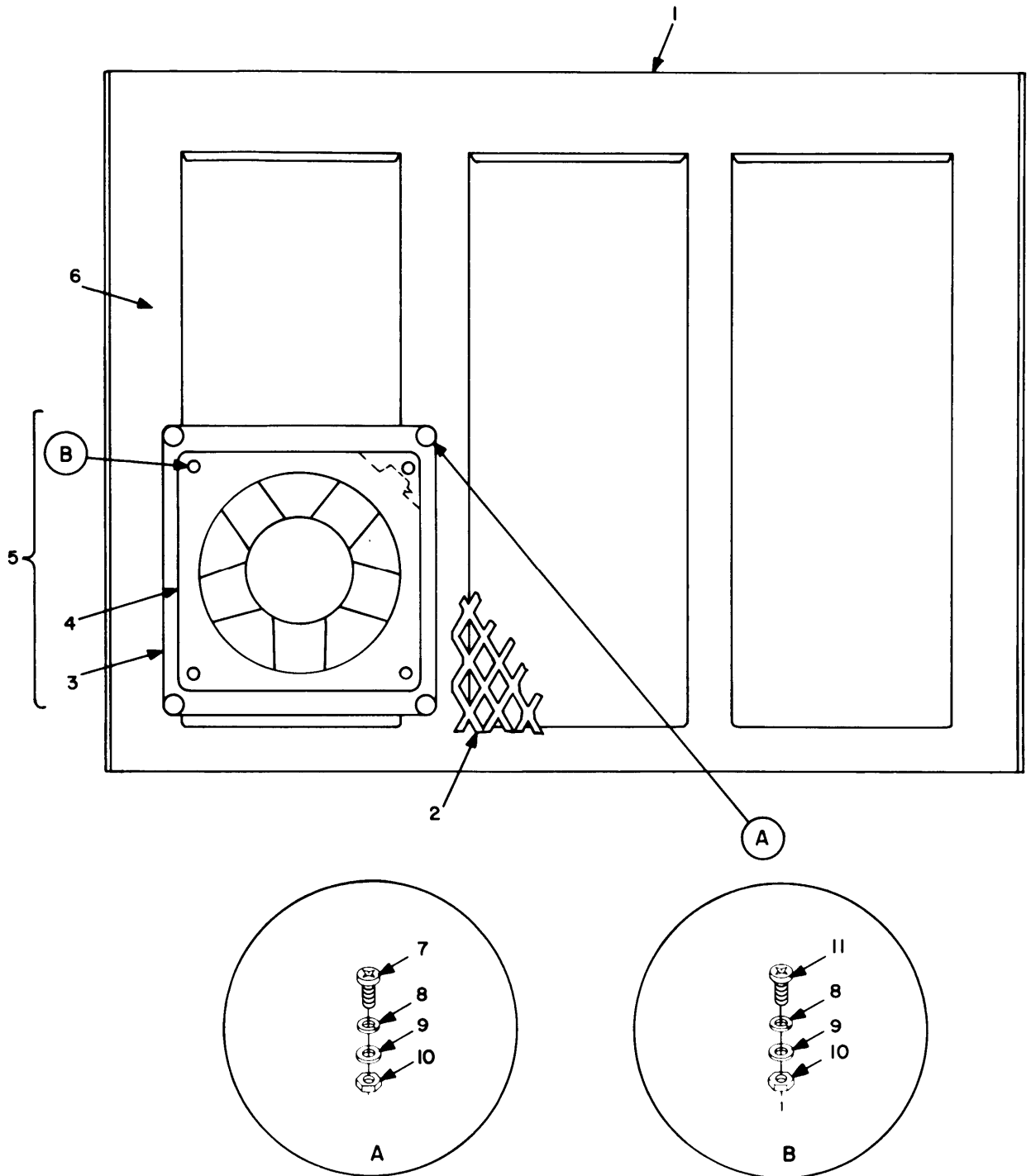
TM11-5820-765-34P-1

(1) ITEM NO	(2) SMR CODE	(3) FSCM	(4) PART NUMBER	(5) DESCRIPTION AND USABLE ON CODE (UOC)	(6) QTY
				GROUP 00 POWER SUPPLY PP-4763/GRC AND PP-4763A/GRC PARTS LOCATION	
				FIGURE 2	
1	XBHHH	80063	SM-D-633317	WIRING HARNESS UOC:BB6	1
1	XBHZZ	80063	SM-D-640033	WIRING HARNESS UOC:3JQ	1
2	PAHZZ	80063	SM-C-640155	RESISTOR, FIXED, WIRE	1
3	XBHZZ	06383	SSC2	CABLE TIE UOC:BB6	1
4	XBHHH	80063	SM-D-633315	WIRING HARNESS UOC:BB6	1
4	XBHZZ	80063	SM-C-640034	WIRING HARNESS UOC:3JQ	1
5	XBHHH	80063	SM-C-633320	FRAME AND SWITCH UOC:BB6	1
5	XBHZZ	80063	SM-D-640049	FRAME ASSEMBLY UOC:3JQ	1
6	XBHZZ	80063	ES-C-202264	SKID UOC:BB6	2
7	PAHZZ	96906	MS21044C06	NUT, SELF-LOCKING, HE UOC:3JQ	1
9	PAHZZ	88044	AN960-10	WASHER, FLAT UOC:3JQ	41
10	PAFHH	80063	SM-D-633353	CIRCUIT CARD ASSEMB UOC:BB6	1
10	PAFHZ	80063	SM-D-640159	CIRCUIT CARD ASSEMB UOC:3JQ	1
11	PAHZZ	80063	SM-B-633361	INSULATOR, BUSHING UOC:BB6	1
12	XBHZZ	80063	SM-B-633362	PLATE, INSULATOR UOC:BB6	1
13	XBHZZ	80063	SM-B-633363	STRAP, RETAINING UOC:BB6	1
14	XBHZZ	80063	SM-B-640045	INSULATION SLEEVING	1
15	XBHHH	80063	SM-B-640158	CHAIN ASSEMBLY	1
16	XBHZZ	80063	SM-B-640180	CHAIN WELDLESS	1
17	PAHZZ	96906	MS51958-65	SCREW, MACHINE	27
18	PAHZZ	96906	MS35338-138	WASHER, LOCK	40
19	PAHZZ	96906	AN960C10L	WASHER, FLAT	42
20	PAHZZ	96906	MS51958-64	SCREW, MACHINE	19
21	PAHZZ	96906	MS51969-1	NUT, PLAIN, HEXAGON	1
22	PAHZZ	96906	MS35335-89	WASHER, LOCK UOC:BB6	3
23	PAHZZ	80063	SM-A-977601-305	NUT, PLAIN, HEXAGON UOC:BB6	8
24	PAFZZ	80063	SM-A-977602-100	WASHER, LOCK UOC:BB6	8

SECTION II TM11-5820-765-34P-1

(1) ITEM NO	(2) SMR CODE	(3) FSCM	(4) PART NUMBER	(5) DESCRIPTION AND USABLE ON CODE (UOC)	(6) QTY
25	XDHZZ	88044	AN961-10T	WASHER, FLAT	4
26	PAHZZ	96906	MS35690-402	NUT, PLAIN, HEXAGON UOC: 3JQ	5
27	PAHZZ	96906	MS35335-75	WASHER, LOCK UOC: 3JQ	4
28	PAHZZ	96906	MS35649-284	NUT, PLAIN, HEXAGON	11
29	PAHZZ	96906	MS35333-107	WASHER, LOCK UOC: 3JQ	2
30	XBHZZ	73734	28220	SCREW, MACHINE UOC: 3JQ	1
31	PAFZZ	80063	SM-B-640107	CABLE ASSEMBLY, POWE	1
32	XAHZZ	80063	SM-A-977599-245	NUT, PLAIN, HEXAGON UOC: BB6	2
33	XAHZZ	80063	SM-A-977602-97	WASHER, LOCK UOC: BB6	2
34	XAHZZ	88044	AN961-4T	WASHER, FLAT UOC: BB6	2
35	XAHZZ	80063	SM-A-977598-215	SCREW, MACHINE UOC: BB6	2
36	PAHZZ	96906	MS35650-304	NUT, PLAIN, HEXAGON	16
37	PAHZZ	96906	MS51958-66	SCREW, MACHINE UOC: BB6	2
38	PAHZZ	96906	MS21044C3	NUT, SELF-LOCKING, HE	3
39	PAHZZ	88044	AN960-416	WASHER, FLAT	6
40	PAHZZ	96906	MS35338-139	WASHER, LOCK	6
41	PAHZZ	96906	MS35307-305	SCREW, CAP, HEXAGON H	6
42	PAHZZ	96906	MS35338-137	WASHER, LOCK	6
43	PAHZZ	88044	AN960C8	WASHER, FLAT	8
44	PAHZZ	96906	MS51958-45	SCREW, MACHINE	8
45	PAHZZ	96906	MS35649-2314	NUT, PLAIN, HEXAGON UOC: BB6	8
46	PAHZZ	96906	MS35338-140	WASHER, LOCK UOC: BB6	8
47	PAHZZ	88044	AN960C516	WASHER, FLAT UOC: BB6	8
48	PAHZZ	96906	MS35307-336	BOLT, MACHINE UOC: BB6	8
49	PAHZZ	96906	MS21044C04	NUT, SELF-LOCKING, HE	2
50	PAHZZ	96906	MS15795-804	WASHER, FLAT	2
51	PAHZZ	96906	MS51959-17	SCREW, MACHINE	1
52	PAHZZ	96906	MS35649-262	NUT, PLAIN, HEXAGON	1
53	PAHZZ	96906	MS35338-41	WASHER, LOCK UOC: BB6	1
54	PAHZZ	88044	AN961-6T	WASHER, FLAT	1
55	XAHZZ	88044	AN961-416T	WASHER, FLAT UOC: BB6	1
56	PAHZZ	96906	MS21044C08	NUT, SELF-LOCKING, HE UOC: BB6	2
57	PAHZZ	96906	MS51957-15	SCREW, MACHINE UOC: BB6	1

END OF FIGURE



EL2XK027

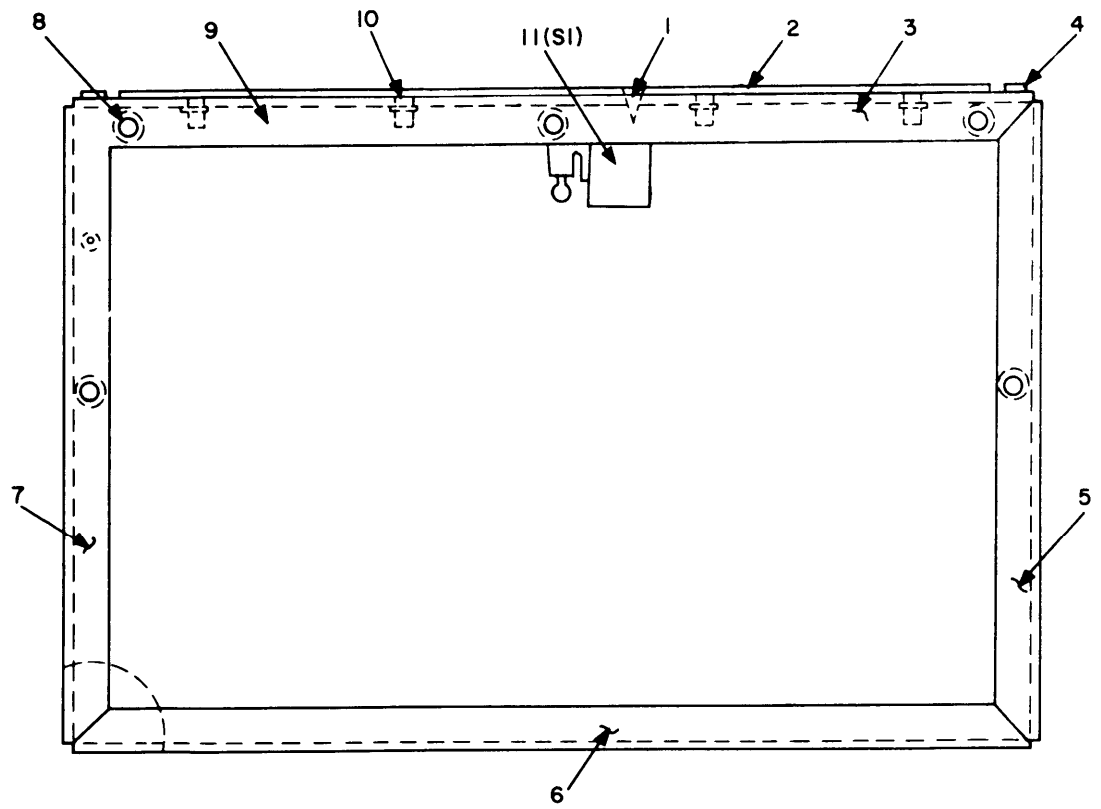
Figure 3. Power supply PP-4763/GRC and PP-4763A/GRC, cover assembly.

SECTION II

TM11-5820-765-34P-1

(1) ITEM NO	(2) SMR CODE	(3) FSCM	(4) PART NUMBER	(5) DESCRIPTION AND USABLE ON CODE (UOC)	(6) QTY
				GROUP 00 POWER SUPPLY PP-4763/GRC AND PP-4763A/GRC COVER ASSEMBLY	
				FIGURE 3	
1	XBHHH	80063	SM-D-640047	COVER	1
2	XBHZZ	80063	SM-B-640134	SCREEN, EXPANDED	1
3	XBHZZ	80063	SM-C-640071	BRACKET, FAN	1
4	PAFZZ	80063	SM-C-640093	FAN, TUBE AXIAL	1
5	PAHHH	80063	SM-C-640003	FAN, ASSEMBL	1
6	XBHZZ	80063	SM-D-640047-1	COVER	1
7	PAHZZ	96906	MS51957-32	SCREW, MACHINE	4
8	PAHZZ	96906	MS35338-136	WASHER, LOCK	8
9	PAHZZ	96906	MS15795-806	WASHER, FLAT	8
10	PAHZZ	96906	MS35649-264	NUT, PLAIN, HEXAGON	8
11	PAHZZ	96906	MS51957-31	SCREW, MACHINE	4

END OF FIGURE



EL2XK028

Figure 4. Power supply PP-4763/GRC and PP-4763A/GRC, frame and switch assembly.

SECTION II

TM11-5820-765-34P-1

(1) ITEM NO	(2) SMR CODE	(3) FSCM	(4) PART NUMBER	(5) DESCRIPTION AND USABLE ON CODE (UOC)	(6) QTY
				GROUP 00 POWER SUPPLY PP-4763/GRC AND PP-4763A/GRC FRAME AND SWITCH ASSEMBLY	
				FIGURE 4	
1	PAHZZ	96906	MS24693C27	SCREW,MACHINE UOC:BB6	2
2	XBHZZ	80063	SM-B-633329	SPACER UOC:BB6	1
3	XBHZZ	80063	SM-C-633330	ANGLE, TOP UOC:BB6	1
4	XBHZZ	03481	A10-130	NUT, PLAIN, BLIND RIV UOC:BB6	2
5	XAHZZ	80063	SM-C-640083-1	ANGLE, SIDE UOC:BB6	1
6	XAHZZ	80063	SM-C-640082	ANGLE, BOTTOM UOC:BB6	1
7	XBHZZ	80063	SM-C-640083-2	ANGLE, SIDE UOC:BB6	1
8	XBHZZ	80063	SM-B-640113	FASTENER, FLUSH UOC:BB6	5
9	XBHHH	80063	SM-D-633319	FRAME ASSEMBLY UOC:BB6	1
10	XBHZZ	03481	A10-230	RIVNUT UOC:BB6	4
11	PAHZZ	96906	MS16106-1	SWITCH, SENSITIVE UOC:BB6	1

END OF FIGURE

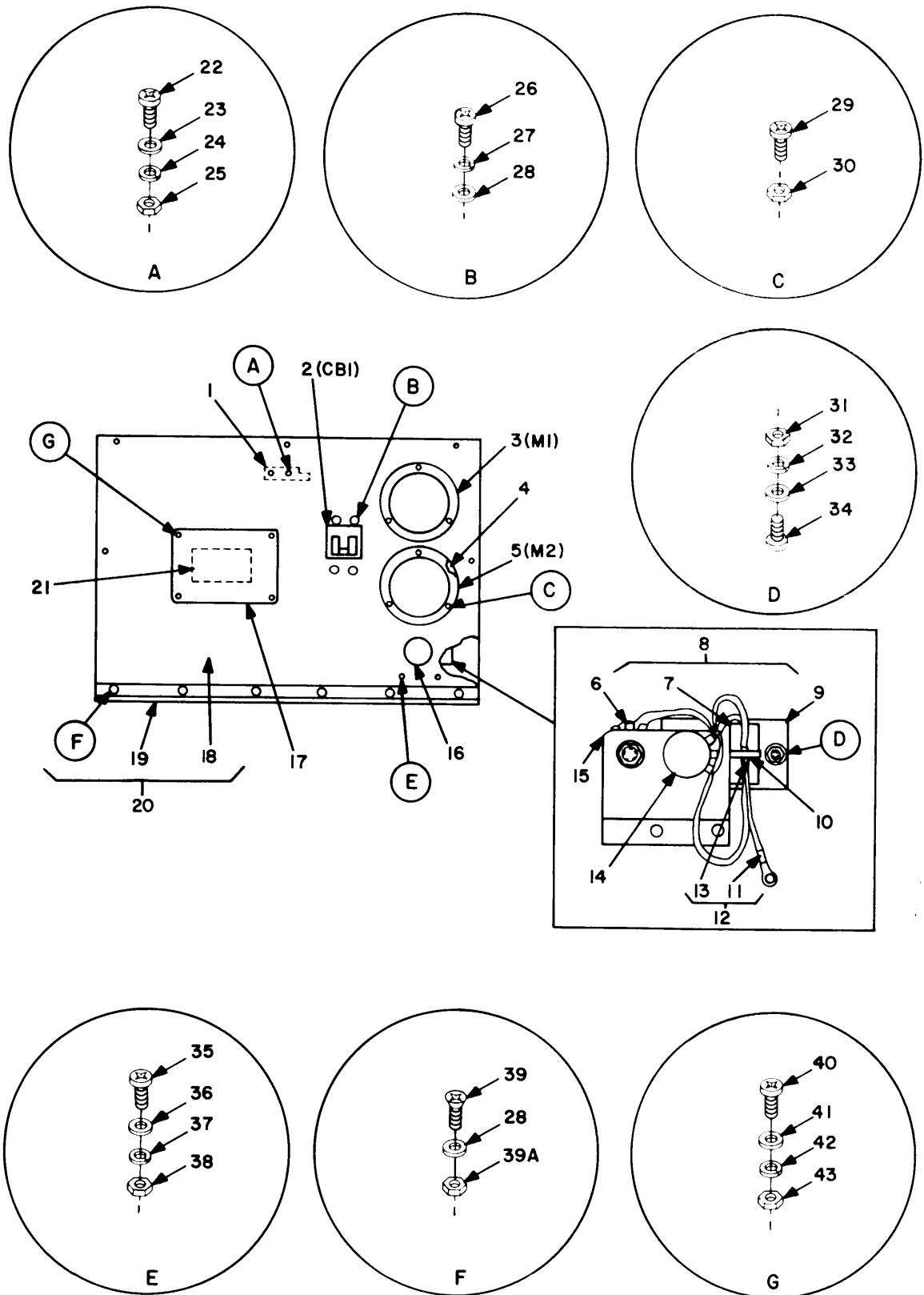


Figure 5. Power supply PP-4763/GRC and PP-4763A/GRC, front panel assembly.

SECTION II

TM11-5820-765-34P-1

(1) ITEM NO	(2) SMR CODE	(3) FSCM	(4) PART NUMBER	(5) DESCRIPTION AND USABLE ON CODE (UOC)	(6) QTY
				GROUP 00 POWER SUPPLY PP-4763/GRC AND PP4763A/GRC FRONT PANEL ASSEMBLY	
				FIGURE 5	
1	XBHZZ	80063	SM-B-633360	BRACKET,RETAIN UOC:BB6	1
2	PAFZZ	81541	APL53-518-1	CIRCUIT BREAKER UOC:BB6	1
2	XBHZZ	74193	AM12MG3-25-77	CIRCUIT BREAKER UOC:3JQ	1
3	PAHZZ	81349	MR36W080DCAAR	AMMETER	1
4	PAHZZ	06045	A05517005	GASKET,METER UOC:3JQ	2
5	PAHZZ	81349	MR36W050DCVVR	VOLTMETER	1
6	PAHZZ	81349	RA20LASB103A	RESISTOR,VARIABLE,W	1
7	XBHZZ	81349	CQ09A1MB475K3	CAPACITOR,FXD,PAPER UOC:BB6	1
8	XBHHH	80063	SM-B-633351	TERMINAL BOARD	1
8	PAHZZ	80063	SM-D-640014	TERMINAL BOARD UOC:3JQ	1
9	XBHZZ	80063	SM-B-633326	INSULATOR UOC:BB6	1
10	XBHZZ	80063	SM-B-640137	CABLE TIE UOC:BB6	1
11	XBHZZ	80063	SM-B-640048-2	TERMINAL,LUG	1
12	XBHZZ	80063	SM-B-640015	RESISTOR ASSEMBLY	1
13	XBHZZ	81349	M22684-02-0118	RESISTOR,FIXED,FILM	1
14	PAHZZ	81349	RA20LASB502A	RESISTOR,VARIABLE,W	1
14	XBHHH	80063	SM-D-640014	TERMINAL BOARD UOC:3JQ	1
15	XBHZZ	80063	SM-B-640072	BRACKET	1
16	XBHZZ	80063	SM-B-640069	COVER	1
17	XBHZZ	80063	SM-B-633335	PLAT	1
18	XBHZZ	80063	SM-D-633323	PANEL-FRONT UOC:BB6	1
19	XBHZZ	80063	SM-B-640064	HINGE,BUTT	1
20	XBHHH	80063	SM-B-633318	PANEL ASSEMBL UOC:BB6	1
21	XBHZZ	80063	SM-B-633359	MARKE UOC:BB6	1
22	PAHZZ	96906	MS51957-45	SCREW,MACHINE UOC:BB6	2
23	PAHZZ	88044	AN960C8	WASHER,FLAT UOC:BB6	2
24	PAHZZ	96906	MS35338-137	WASHER,LOCK UOC:BB6	2
25	PAHZZ	96906	MS35649-284	NUT,PLAIN,HEXAGON UOC:BB6	2
26	PAHZZ	96906	MS51959-28	SCREW,MACHINE	4

SECTION II

TM11-5820-765-34P-1

(1) ITEM NO	(2) SMR CODE	(3) FSCM	(4) PART NUMBER	(5) DESCRIPTION AND USABLE ON CODE (UOC)	(6) QTY
27	PAHZZ	96906	MS35338-136	WASHER, LOCK UOC:BB6	4
28	PAHZZ	96906	MS15795-806	WASHER, FLAT	10
29	PAHZZ	96906	MS35206-232	SCREW, MACHINE	5
30	PAHZZ	96906	MS21044C06	NUT, SELF-LOCKING, HE	11
31	PAHZZ	96906	MS35650-305T	NUT, PLAIN, HEXAGON	2
32	XBFZZ	96906	MS35338-100	WASHER, LOCK	2
33	XDHZZ	88044	AN961-10T	WASHER, FLAT	2
34	PAHZZ	80063	SM-A-977600-268	SCREW, MACHINE	1
35	PAHZZ	96906	MS51958-63	SCREW, MACHINE	2
36	PAHZZ	88044	AN960C10L	WASHER, FLAT	2
37	PAHZZ	96906	MS35338-138	WASHER, LOCK	2
38	PAHZZ	96906	MS35650-304	NUT, PLAIN, HEXAGON UOC:BB6	2
39	PAHZZ	96906	MS24693C27	SCREW, MACHINE	6
39A	PAHZZ	96906	MS21044C06	NUT, SELF-LOCKING, HE	6
40	PAHZZ	96906	MS51957-15	SCREW, MACHINE	4
41	PAHZZ	96906	MS15795-804	WASHER, FLAT	4
42	PAHZZ	96906	MS35338-135	WASHER, LOCK	4
43	PAHZZ	96906	MS35649-244	NUT, PLAIN, HEXAGON	4

END OF FIGURE

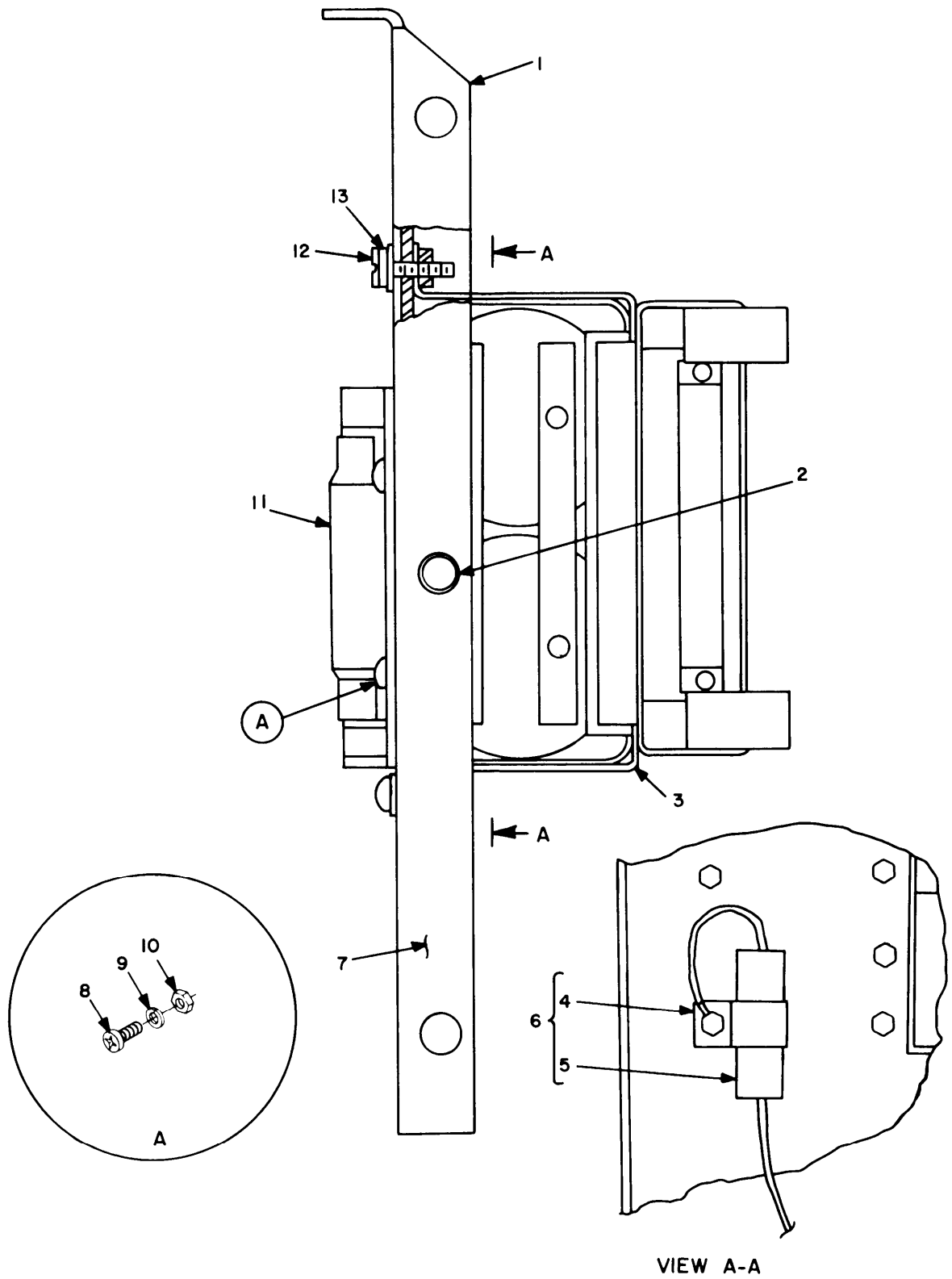


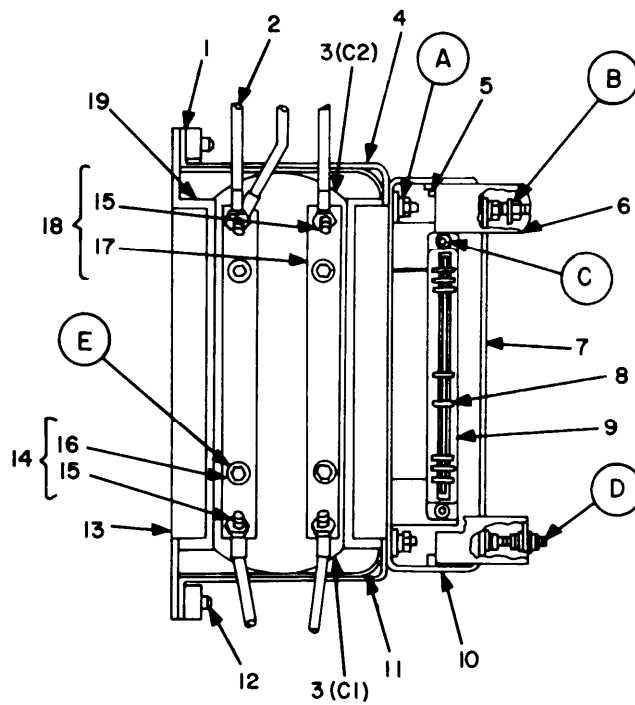
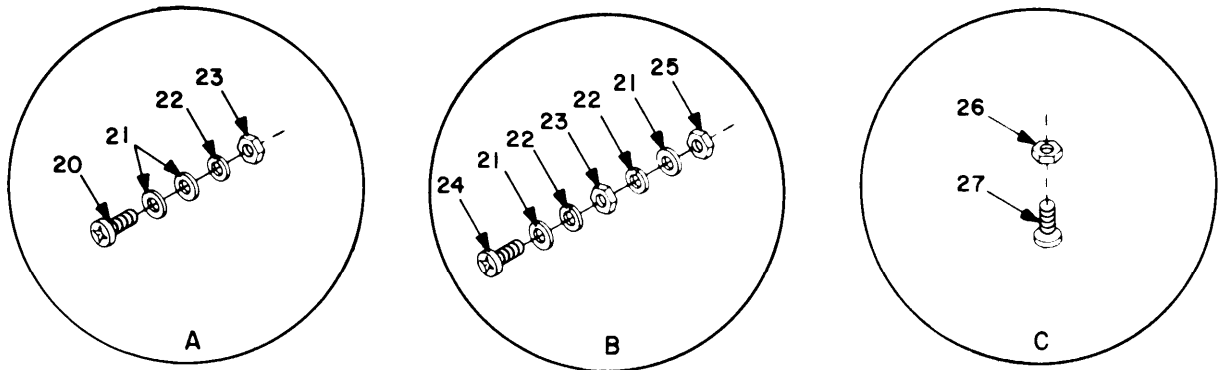
Figure 6. Power supply PP-4763/GRC and PP-4763A/GRC, left panel assembly.

SECTION II

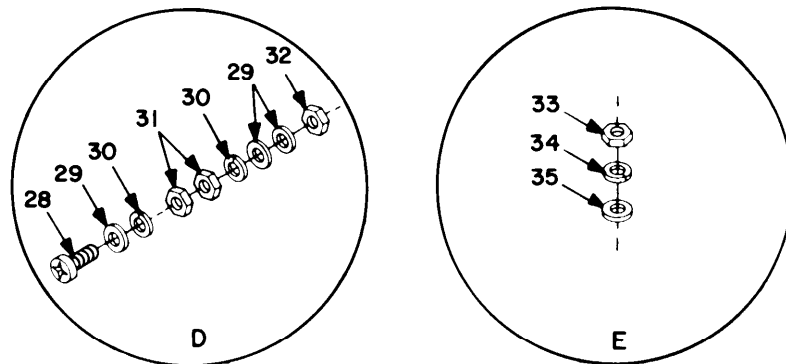
TM11-5820-765-34P-1

(1) ITEM NO	(2) SMR CODE	(3) FSCM	(4) PART NUMBER	(5) DESCRIPTION AND USABLE ON CODE (UOC)	(6) QTY
				GROUP 00 POWER SUPPLY PP-4763/GRC AND PP-4763A/GRC LEFT PANEL ASSEMBLY	
				FIGURE 6	
1	XBHHH	80063	SM-D-633333	PANEL, LEFT UOC:BB6	1
1	XBHZZ	80063	SM-D-640092	PANEL, LEFT UOC:3JQ	1
2	XBHZZ	03481	A10-130	NUT, PLAIN, BLIND RIV UOC:BB6	1
3	XBHHH	80063	SM-C-640019	CAPACITOR ASSEMBLY	1
4	PAHZZ	96906	MS25036-103	TERMINAL, LUG UOC:BB6	1
5	PAHZZ	81349	CP12A1KC474K	CAPACITOR UOC:BB6	1
6	PAHZZ	80063	SM-B-977605	CAPACITOR ASSY, MOD UOC:BB6	1
7	XBHZZ	80063	SM-D-633333-1	PANEL UOC:BB6	1
8	PAHZZ	96906	MS51958-64	SCREW, MACHINE	5
9	PAHZZ	96906	MS35338-138	WASHER, LOCK	9
10	PAHZZ	96906	MS35650-304	NUT, PLAIN, HEXAGON	5
11	PAHZZ	96906	MS18012-5	HANDLE, BAIL	1
12	PAHZZ	96906	MS51958-65	SCREW, MACHINE	4
13	PAHZZ	88044	AN960C10L	WASHER, FLAT	9

END OF FIGURE



CAPACITOR ASSEMBLY

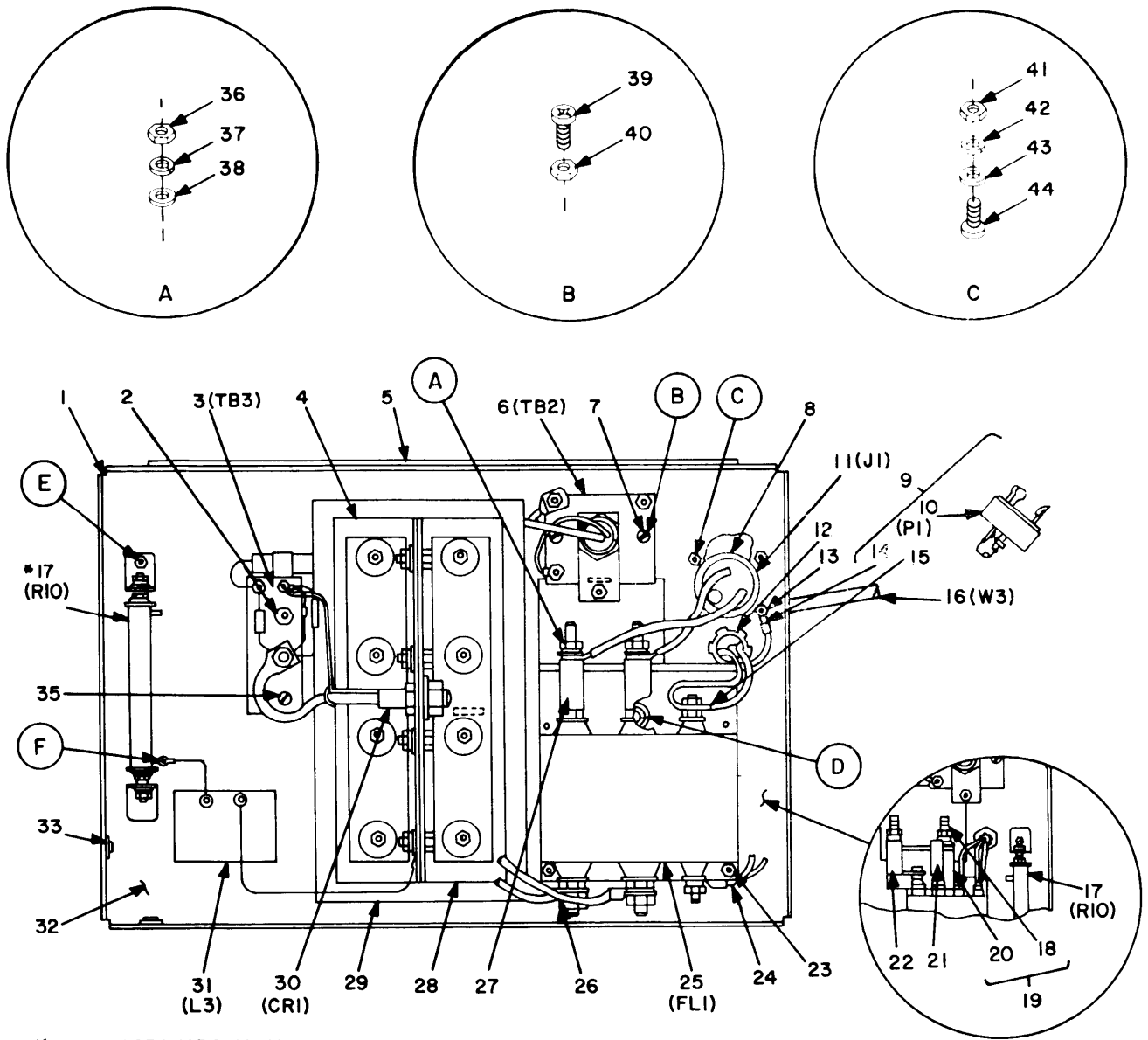


EL2XK031

Figure 7. Power supply PP-4763/GRC and PP-4763A/GRC, left panel subassembly.

(1) ITEM NO	(2) SMR CODE	(3) FSCM	(4) PART NUMBER	(5) DESCRIPTION AND USABLE ON CODE (UOC)	(6) QTY
GROUP 00 POWER SUPPLY PP-4763/GRC AND PP-4763A/GRC LEFT PANEL SUBASSEMBLY					
FIGURE 7					
1	XBHZZ	80063	SM-B-640127	BAR,CAPACITOR	2
2	PAHZZ	80063	SM-D-640037	WIRING HARNESS	1
3	XBHZZ	80063	SM-B-633372	CAPACITOR, FIXED, ELE UOC:BB6	2
4	XBHZZ	80063	SM-D-640124	CASE,CAPACITOR	1
5	PAHZZ	80063	SM-B-640135	HOLDER,CIRCUIT BOAR	2
6	XBHZZ	80063	SM-B-640128	BRACKET	2
7	XBHZZ	80063	SM-C-640123	PLATE,BAFFLE	1
8	PAHZZ	71468	60-6007-48-28	KEY,POLARIZING	1
9	PAHZZ	04013	30-40	GUIDE,CARD	1
10	XBHZZ	80063	SM-C-640122	CASE,CAPACITOR	1
11	XBHZZ	80063	SM-B-640130	INSULATOR	1
12	PAHZZ	96906	MS24693C272	SCREW,MACHINE	2
13	XBHZZ	80063	SM-C-640125	PLATE CAPACITOR	1
14	XBHZZ	80063	SM-B-640020	BUS BAR ASSEMBLY	1
15	PAHZZ	80063	SM-B-640120-2	SCREW, SHOULDER	4
16	XBHZZ	80063	SM-B-640129-1	BUS BAR	1
17	XBHZZ	80063	SM-B-640129-2	BUS BAR	1
18	XBHZZ	80063	SM-B-640021	BUS BAR ASSEMBLY	1
19	XBHZZ	80063	SM-B-640126	INSULATOR	1
20	PAHZZ	96906	MS51958-63	SCREW,MACHINE	5
21	PAHZZ	88044	AN960C10	WASHER, FLAT	10
22	PAHZZ	96906	MS35338-138	WASHER, LOCK	7
23	PAHZZ	96906	MS35650-304	NUT, PLAIN, HEXAGON	6
24	PAHZZ	96906	MS51958-65	SCREW,MACHINE UOC:BB6	1
25	PAHZZ	96906	MS21044C3	NUT, SELF-LOCKING, HE UOC:BB6	1
26	PAHZZ	96906	MS21044C04	NUT, SELF-LOCKING, HE	2
27	PAHZZ	96906	MS51957-17	SCREW, MACHINE	2
28	PAHZZ	96906	MS51957-49	SCREW, MACHINE	2
29	PAHZZ	88044	AN960C8	WASHER, FLAT	4
30	PAHZZ	96906	MS35338-137	WASHER, LOCK	4
31	PAHZZ	96906	MS35649-284	NUT, PLAIN, HEXAGON	4
32	PAHZZ	96906	MS21044C08	NUT, SELF-LOCKING, HE	2
33	PAHZZ	96906	MS35650-305	NUT, PLAIN, HEXAGON UOC:BB6	4
34	PAHZZ	96906	MS16214-21	WASHER, LOCK	4
35	PAHZZ	88044	AN961-10	WASHER, FLAT	4

END OF FIGURE



*-PP-4763A/GRC ONLY.
ITEM 34 NOT USED.

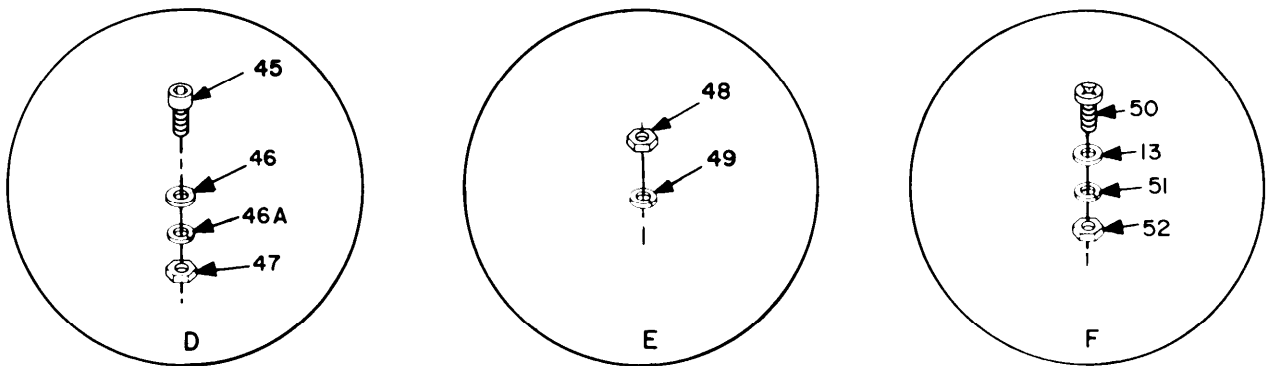


Figure 8. Power supply PP-4763/GRC and PP-4763A/GRC, rear panel internal view.

SECTION II

TM11-5820-765-34P-1

(1) ITEM NO	(2) SMR CODE	(3) FSCM	(4) PART NUMBER	(5) DESCRIPTION AND USABLE ON CODE (UOC)	(6) QTY
				GROUP 00 POWER SUPPLY PP-4763/GRC AND PP-4763A/GRC REAR PANEL INTERNAL VIEW	
				FIGURE 8	
1	XBHHH	80063	SM-D-633324	PANEL, REAR UOC: BB6	1
1	XBHZZ	80063	SM-D-640063	PANEL, REAR UOC: 3JQ	1
2	PAHZZ	80063	SM-B-640140-1	SPACER, SLEEVE	2
3	XBHHH	80063	SM-B-633302	TERMINAL BOARD ASSY UOC: BB6	1
3	PAHHH	80063	SM-B-640005	TERMINAL BOARD UOC: 3JQ	1
4	XBHZZ	80063	SM-B-640056	INSULATOR	2
5	XBHZZ	80063	SM-B-640156	SPACER, INSERT, REAR UOC: BB6	1
6	XBHHH	80063	SM-B-640009	TERMINAL BOARD	1
7	PAHZZ	80063	SM-B-640140-2	SPACER, SLEEVE	2
8	XBHZZ	96906	MS25043-22C	COVER, ELECTRICAL UOC: BB6	1
9	XBHHH	80063	SM-B-633342	CABLE ASSY, PWR, ELEC UOC: BB6	1
9	PAHHH	81861	6700-0282-0006	CABLE ASSEMBLY, UOC: 3JQ	1
10	PAHZZ	74545	3331	CONNECTOR, PLUG, ELEC UOC: BB6	1
11	PAHZZ	96906	MS3102R22-2S	CONNECTOR, RECEPTACL UOC: BB6	1
12	PAHZZ	80063	SM-B-640117	CABLE CLAMP, MOD UOC: BB6	1
12	XBHZZ	80063	SM-A-640040	CLAMP, CABLE, STRAIN UOC: 3JQ	1
13	PAHZZ	88044	AN961-6T	WASHER, FLAT	2
14	PAHZZ	96906	MS25036-111	TERMINAL, LUG UOC: BB6	1
15	PAHZZ	96906	MS25036-112	TERMINAL, LUG	2
16	XBHZZ	81349	C003H0F3-12-0625	CABLE, ELECTRICAL UOC: BB6	V
16	XBHZZ	04946	703-28	CABLE, POWER, UOC: 3JQ	V
17	XBHHH	80063	SM-B-633303	RESISTOR ASSEMBLY UOC: BB6	1
17	PAHHH	80063	SM-B-640011	RESISTOR ASSEMBLY UOC: 3JQ	1
18	XBHZZ	80063	SM-A-977598-344	SCREW, SPLINED	2
19	PAHZZ	80063	SM-B-633304	PRINTED CIRCUIT BOA UOC: BB6	1
20	XBHZZ	80063	SM-B-640066	INSULATOR, MODIFIED UOC: 3JQ	1

SECTION II

TM11-5820-765-34P-1

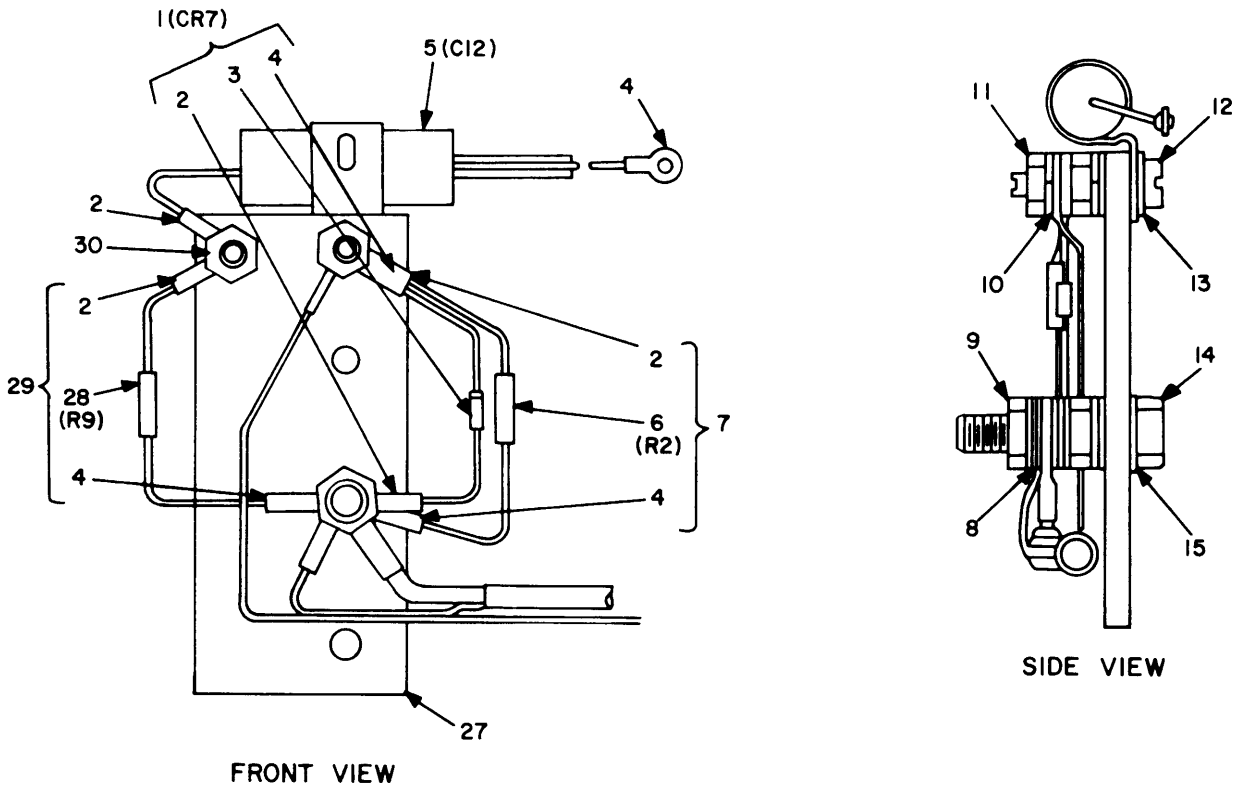
(1) ITEM NO	(2) SMR CODE	(3) FSCM	(4) PART NUMBER	(5) DESCRIPTION AND USABLE ON CODE (UOC)	(6) QTY
20	XBHZZ	80063	SM-B-633325	INSULATOR, MODIFIED UOC: BB6	1
21	XBHZZ	80063	SM-B-640051	BUS, CONDUCTOR UOC: 3JQ	1
22	XBHZZ	80063	SM-B-640050	BUS BAR UOC: 3JQ	1
23	PAHZZ	96906	MS51958-63	SCREW, MACHINE UOC: BB6	9
24	XBHZZ	80063	SM-B-640036	WIRING HARNESS UOC: 3JQ	1
25	XBHZZ	80063	SM-D-633343	FILTER, RF UOC: BB6	1
25	PAHZZ	02294	GF7390-1	FILTER, RADIO UOC: 3JQ	1
26	XBHHH	80063	SM-D-633316	WIRING HARNESS UOC: BB6	1
26	XBHZZ	80063	SM-B-640035	WIRING HARNESS UOC: 3JQ	1
27	XBHZZ	80063	SM-B-633321	BUS BAR UOC: BB6	2
28	XBHZZ	80063	SM-C-640054	HEAT SINK	2
29	PAHZZ	80063	SM-C-640057	INSULATOR	1
30	PAHZZ	81349	JAN2N2027	SEMICONDUCTOR DEVIC UOC: BB6	1
30	XBHZZ	80131	2N2026	SEMICONDUCTOR DEVIC UOC: 3JQ	6
31	PAHZZ	80063	SM-C-633368	REACTOR UOC: BB6	1
32	XBHZZ	80063	SM-D-633324-1	PANEL, REAR UOC: BB6	1
33	XBHZZ	03481	A10-130	NUT, PLAIN, BLIND RIV UOC: BB6	14
35	PAHZZ	96906	MS51958-69	SCREW, MACHINE	2
36	XBHZZ	96906	MS51969-1	NUT, PLAIN, HEXAGON UOC: BB6	2
37	PAHZZ	96906	MS35335-89	WASHER, LOCK UOC: BB6	2
38	XDHZZ	88044	AN961-416T	WASHER, FLAT	8
39	PAHZZ	96906	MS51958-70	SCREW, MACHINE	2
40	PAHZZ	96906	MS35650-304	NUT, PLAIN, HEXAGON	3
41	PAHZZ	96906	MS35649-244	NUT, PLAIN, HEXAGON UOC: BB6	4
42	PAHZZ	96906	MS35338-135	WASHER, LOCK UOC: BB6	4
43	PAHZZ	96906	MS15795-804	WASHER, FLAT UOC: BB6	4
44	XBHZZ	96906	MS51957-18	SCREW, MACHINE UOC: BB6	4
45	PAHZZ	96906	MS51958-66	SCREW, MACHINE	3
46	PAHZZ	88044	AN960C10L	WASHER, FLAT UOC: BB6	20
47	XBHZZ	03481	A10-230	RIVNUT	2

SECTION II

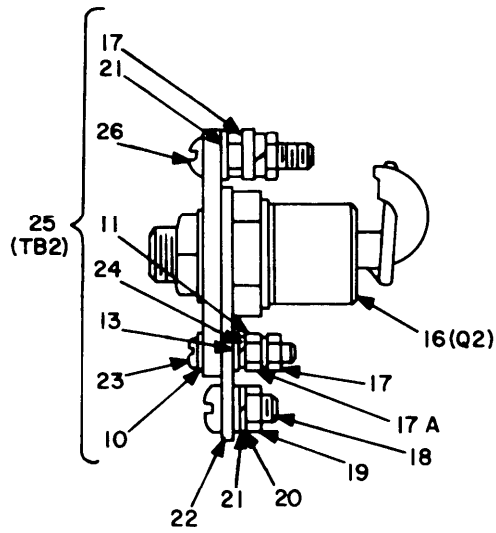
TM11-5820-765-34P-1

(1) ITEM NO	(2) SMR CODE	(3) FSCM	(4) PART NUMBER	(5) DESCRIPTION AND USABLE ON CODE (UOC)	(6) QTY
48	PAHZZ	96906	MS35650-302	UOC:BB6 NUT, PLAIN, HEXAGON	13
49	PAHZZ	96906	MS35338-138	WASHER, LOCK UOC:BB6	20
50	XBHZZ	80063	SM-A-977598-228	SCREW, MACHINE UOC:BB6	2
51	PAHZZ	96906	MS35338-98	WASHER, LOCK	2
52	XBHZZ	80063	SM-A-977599-265	NUT, PLAIN, HEXAGON UOC:BB6	2

END OF FIGURE



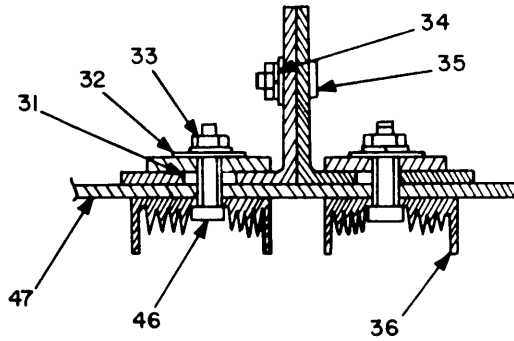
TERMINAL BOARD ASSEMBLY TB3



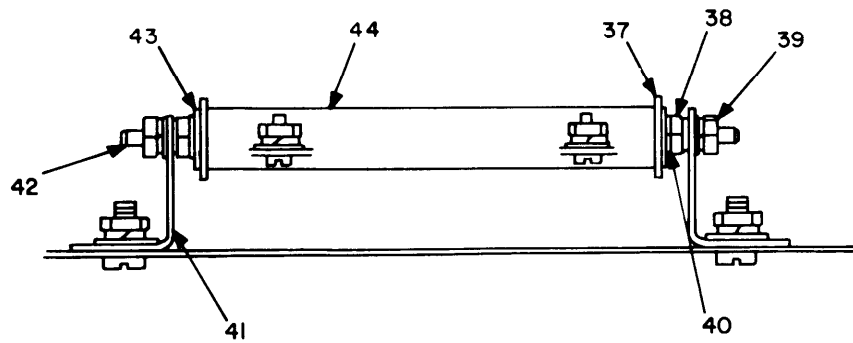
TERMINAL BOARD ASSEMBLY TB2

EL2XK033

Figure 9. Power supply PP-4763/GRC and PP-4763A/GRC, rear panel subassemblies (Sheet 1 of 2).



HEAT SINK ASSEMBLY



RESISTOR ASSEMBLY

NOTE ITEM 45 NOT USED

EL2XK034

Figure 9. Power supply PP-4763/GRC and PP-4763A/GRC, rear panel subassemblies (Sheet 2 of 2).

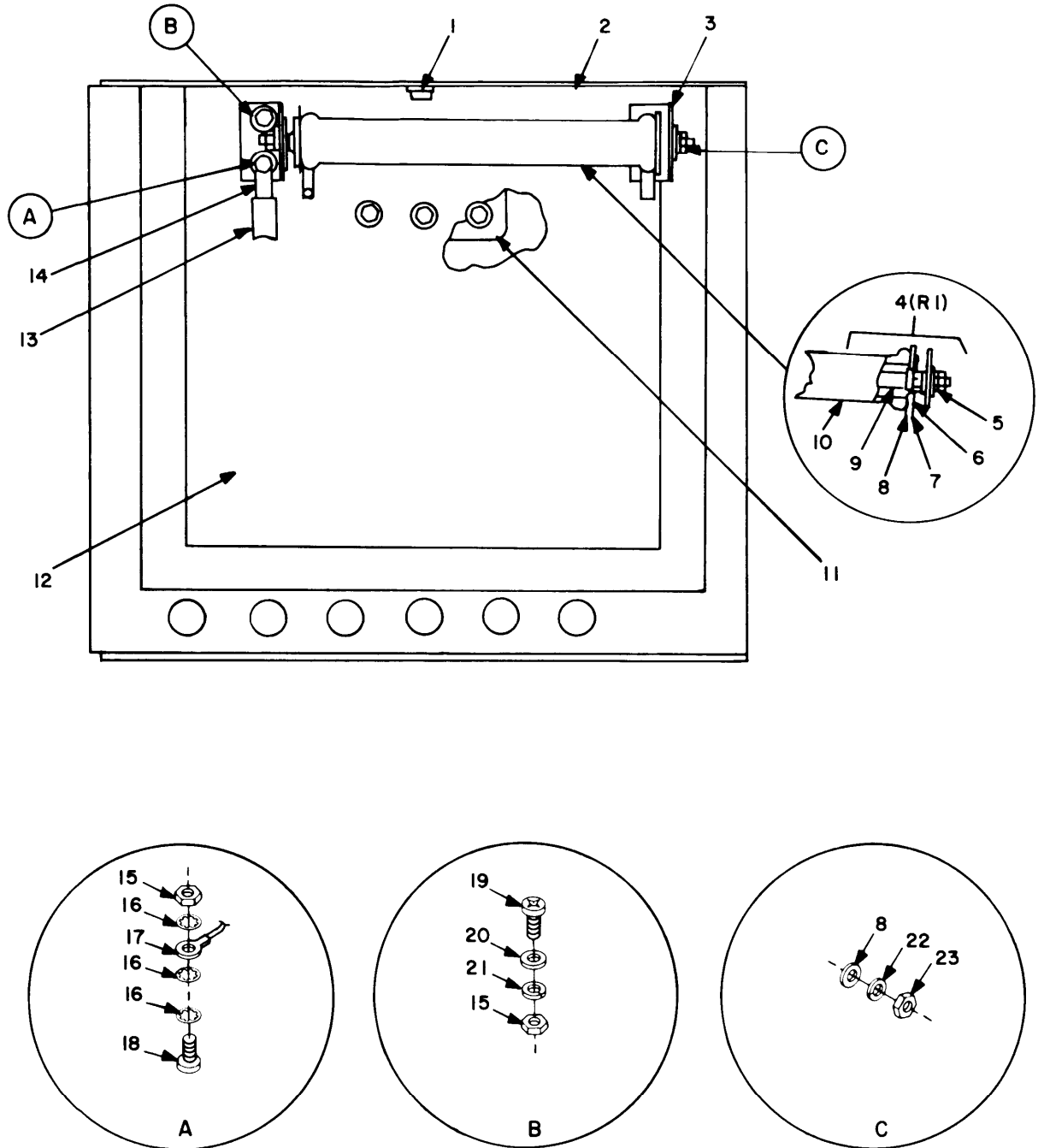
(1) ITEM NO	(2) SMR CODE	(3) FSCM	(4) PART NUMBER	(5) DESCRIPTION AND USABLE ON CODE (UOC)	(6) QTY
GROUP 00 POWER SUPPLY PP-4763/GRC AND PP-4763A/GRC REAR PANEL SUBASSEMBLIES					
FIGURE 9					
1	XBHZZ	80063	SM-B-640008	SEMICONDUCTOR DEVIC	1
2	XBHZZ	80063	SM-B-640048-1	TERMINAL, LUG	1
3	PAHZZ	81349	JAN1N3611	SEMICONDUCTOR DEVIC UOC:BB6	1
3	XBHZZ	81349	JAN1N3611	SEMICONDUCTOR DEVIC UOC:3JQ	1
4	PAHZZ	80063	SM-B-640048-3	TERMINAL, LUG UOC:BB6	1
5	PAHZZ	81349	CP12A1KC474K	CAPACITOR, FIXED, PAP UOC:BB6	1
5	PAHZZ	96733	18M2474DG	CAPACITOR, FIXED, PAP UOC:3JQ	1
6	XBHZZ	81349	M22684-02-0036	RESISTOR, FIXED, FILM	1
7	XBHZZ	80063	SM-B-640006	RESISTOR ASSEMBLY	1
8	PAHZZ	96906	MS35335-89	WASHER, LOCK	2
9	PAHZZ	80063	SM-A-977599-2255	NUT, PLAIN, HEXAGON	2
10	PAHZZ	96906	MS35335-86	WASHER, LOCK	6
11	PAHZZ	96906	MS35649-265T	NUT, PLAIN, HEXAGON UOC:BB6	4
12	PAHZZ	80063	SM-A-977598-234	SCREW, MACHINE	1
13	PAHZZ	88044	AN961-6T	WASHER, FLAT	4
14	PAHZZ	80063	SM-A-977598-285	SCREW, CAP, HEXAGON H	1
15	XDHZZ	88044	AN961-416T	WASHER, FLAT	3
16	XBHZZ	81349	JAN2N1910W	SEMICONDUCTOR DEVIC	1
17	PAHZZ	96906	MS35650-305T	NUT, PLAIN, HEXAGON	5
17A	PAHZZ	96906	MS36649-265T	WASHER, LOCK	1
18	PAHZZ	80063	SM-A-977600-263	SCREW, MACHINE	1
19	XBHZZ	96906	MS36649-262	NUT, PLAIN, HEXAGON	1
20	PAHZZ	96906	MS35338-100	WASHER, LOCK	3
21	XDHZZ	88044	AN961-10T	WASHER, FLAT	5
22	PAHZZ	80063	SM-B-640119	BUS BAR	1
23	PAHZZ	96906	MS35206-233	SCREW, MACHINE	1
24	XBHZZ	80063	M111586-1	INSULATOR UOC:3JQ	1
25	XBHHH	80063	SM-B-640010	TERMINAL BOARD	1
26	PAHZZ	80063	SM-B-640120-1	SCREW, SHOULDER	2
27	XBHZZ	80063	SM-B-633327	INSULATOR, PLATE UOC:BB6	1
27	XBHZZ	80063	SM-B-640075	INSULATOR, PLATE UOC:3JQ	1
28	XBHZZ	81349	M22684-02-0010	RESISTOR, FIXED, FILM	1
29	PAHHH	80063	SM-B-640007	RESISTOR ASSEMBLY	1
30	PAHZZ	80063	SM-A-977598-232	SCREW, MACHINE UOC:BB6	1
31	PAHZZ	80063	SM-B-640074	WASHER, NONMETALLIC	8

SECTION II

TM11-5820-765-34P-1

(1) ITEM NO	(2) SMR CODE	(3) FSCM	(4) PART NUMBER	(5) DESCRIPTION AND USABLE ON CODE (UOC)	(6) QTY
32	XBHZZ	80063	SM-A-977604	WASHER, FLAT	8
33	PAHZZ	96906	MS35649-2254	NUT, PLAIN, HEXAGON	12
34	PAHZZ	96906	MS35338-139	WASHER, LOCK	8
35	PAHZZ	96906	MS35307-306	SCREW, CAP, HEXAGON H	4
36	PAHZZ	80063	SM-B-640065	HEAT SINK UOC: 3JQ	2
37	PAHZZ	63743	922N	INSULATOR, WASHER	2
38	PAHZZ	96906	MS21044C08	NUT, SELF-LOCKING, HE	2
39	PAHZZ	96906	MS35649-284	NUT, PLAIN, HEXAGON	2
40	PAHZZ	88044	AN960C8	WASHER, FLAT	4
41	XBHZZ	80063	SM-B-640079	BRACKET	2
42	XBHZZ	80063	SM-B-640154	STUD, CONTINUOUS THR	1
43	XBHZZ	44655	6001	WASHER, SHIELDED UOC: BB6	2
44	PAHZZ	81349	RW35V750	RESISTOR, FIXED, WIRE UOC: BB6	1
44	PAHZZ	44655	0400E	RESISTOR, FIXED, WIRE UOC: 3JQ	1
46	PAHZZ	96906	MS35307-308	SCREW, CAP, HEXAGON H	8
47	XBHZZ	80063	SM-C-633365	BRACKET, MOUNTING UOC: BB6	2

END OF FIGURE



EL2XK035

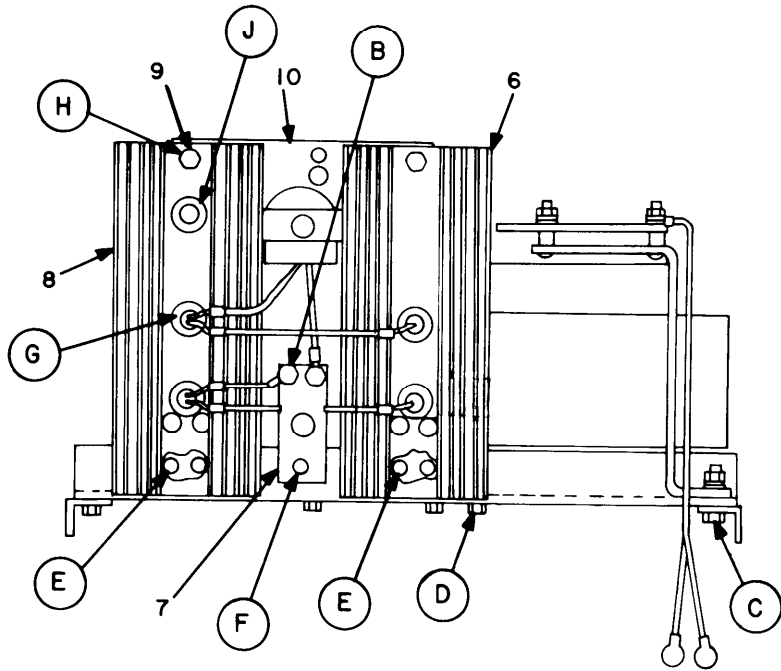
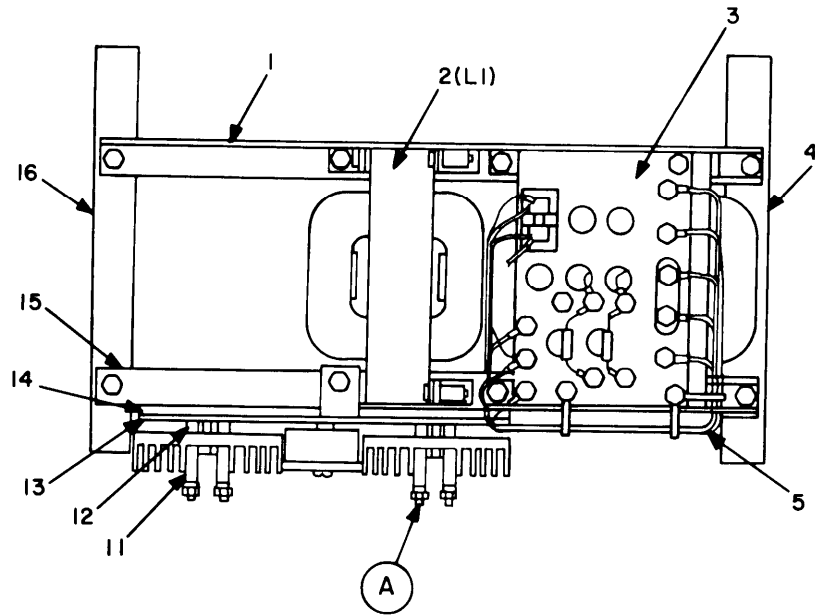
Figure 10. Power supply PP-4763/GRC and PP-4763A/GRC, right panel, internal view.

SECTION II

TM11-5820-765-34P-1

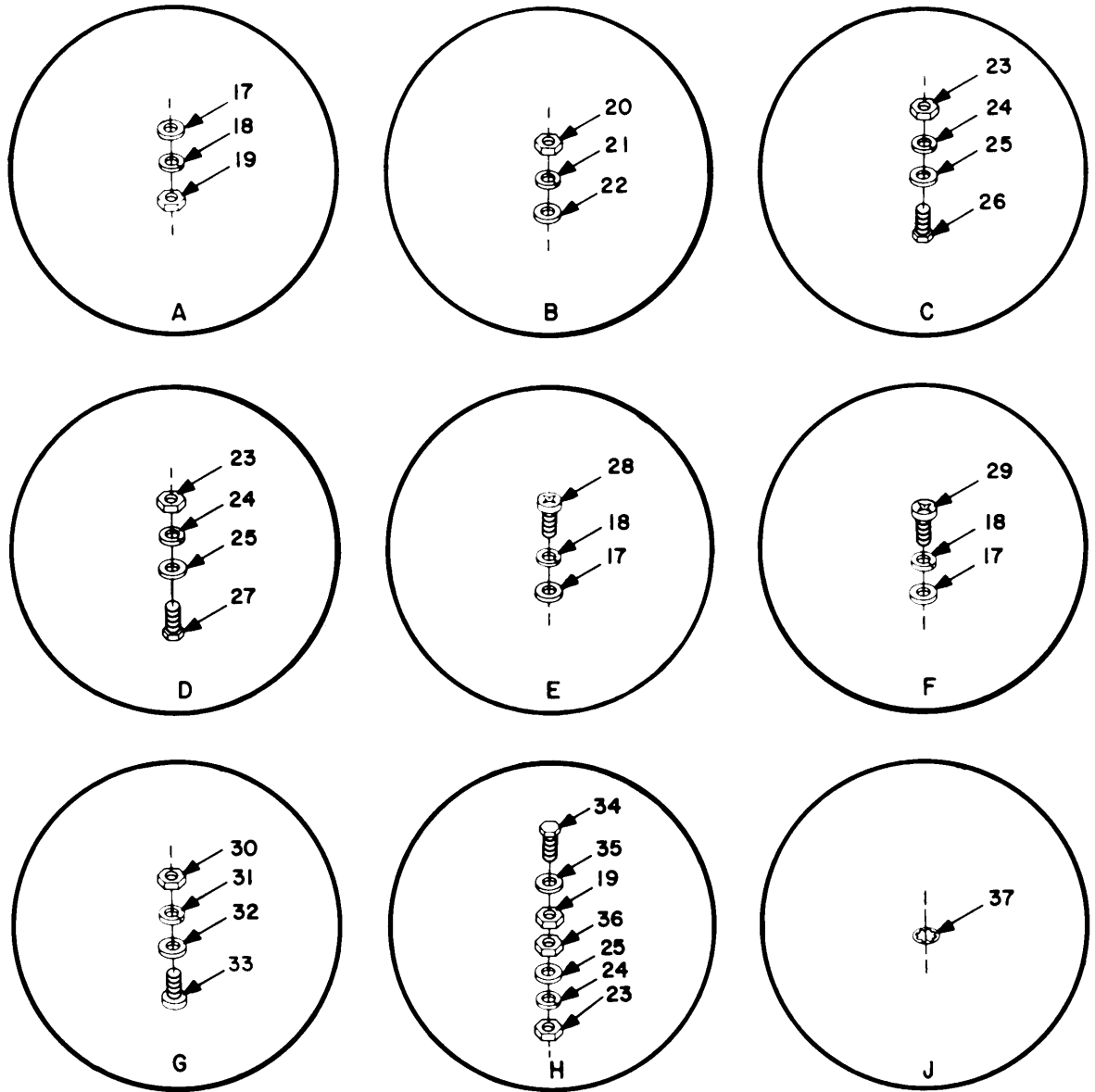
(1) ITEM NO	(2) SMR CODE	(3) FSCM	(4) PART NUMBER	(5) DESCRIPTION AND USABLE ON CODE (UOC)	(6) QTY
				GROUP 00 POWER SUPPLY PP-4763/GRC AND PP-4763A/GRC RIGHT PANEL ,INTERNAL VIEW	
				FIGURE 10	
1	XBHZZ	03481	A10-130	NUT,PLAIN,BLIND RIV UOC:BB6	1
2	XBHHH	80063	SM-D-633328	PANEL,RIGHT UOC:BB6	1
2	XBHZZ	80063	SM-D-640076	PANEL,RIGHT UOC:3JQ	1
3	XBHZZ	80063	SM-B-640077	BRACKET	2
4	PAHHH	80063	SM-B-640017	RESISTOR ASSY	1
5	XBHZZ	80063	SM-B-640136	NUT,SELF-LOCKING	2
6	PAHZZ	80063	SM-640106-2	WASHER, SHIELEDDED	2
7	PAHZZ	44655	6017	INSULATOR, WASHER	2
8	PAHZZ	88044	AN960C416	WASHER, FLAT	2
9	XBHZZ	80063	SM-B-640078	STUD, CONTINUOUS THR	1
10	PAHZZ	81349	RW38V8R2	RESISTOR, FIXED, WIRE UOC:BB6	1
11	PAHZZ	96906	MS18012-5	HANDLE, BAIL	1
12	XBHZZ	80063	SM-D-633328-1	PANEL, RIGHT UOC:BB6	1
13	XBHZZ	80063	SM-B-640041-1	COPPER BRAID WIRE	1
14	PAHZZ	96906	MS25036-112	TERMINAL, LUG	2
15	PAHZZ	96906	MS35650-304	NUT, PLAIN, HEXAGON	9
16	PAHZZ	96906	MS35335-88	WASHER, LOCK	3
17	XBHZZ	80063	SM-B-640041	LEAD, ELECTRICAL	1
18	PAHZZ	96906	MS51958-64	SCREW, MACHINE	6
19	PAHZZ	96906	MS51958-63	SCREW, MACHINE	3
20	PAHZZ	88044	AN960C10L	WASHER, FLAT	8
21	PAHZZ	96906	MS35338-138	WASHER, LOCK	8
22	PAHZZ	96906	MS35338-139	WASHER, LOCK	2
23	PAHZZ	96906	MS16228-4C	NUT, SELF-LOCKING, HE	2

END OF FIGURE



EL2XK036

Figure 11. Power supply PP-4763/GRC and PP-4763A/GRC, transformer frame assembly (Sheet 1 of 2).



EL2XK037

Figure 11. Power supply PP-4763/GRC and PP-4763A/GRC, transformer frame assembly (Sheet 2 of 2).

SECTION II

TM11-5820-765-34P-1

(1) ITEM NO	(2) SMR CODE	(3) FSCM	(4) PART NUMBER	(5) DESCRIPTION AND USABLE ON CODE (UOC)	(6) QTY
GROUP 00 POWER SUPPLY PP-4763/GRC AND PP-4763A/GRC TRANS- FORMER FRAME ASSEMBLY					
FIGURE 11					
1	XBHZZ	80063	SM-B-640143	BRACKET	1
2	XBHZZ	80063	SM-D-633338	REACTOR ASSEMBLY UOC:BB6	1
2	PAHZZ	80063	SM-D-640100	REACTOR UOC:3JQ	1
3	PAHZZ	80063	SM-C-633312	TRANSFORMER ASSY	1
3	XBHHH	80063	SM-C-640029	TRANSFORMER UOC:3JQ	1
4	XBHZZ	80063	SM-B-640146-1	ANGLE	1
5	XBHHH	80063	SM-D-633314	WIRING HARNESS UOC:BB6	1
5	XBHZZ	80063	SM-C-640038	WIRING HARNESS UOC:3JQ	1
6	XBHHH	80063	SM-B-640026	HEAT SINK AND DIODE	1
7	XBHHH	80063	SM-B-640027	TERMINAL BOARD	1
8	XBHHH	80063	SM-B-640025	HEAT SINK AND DIODE	1
9	PAHZZ	80063	SM-B-640137-4	CABLE, TIE UOC:BB6	1
10	XBHHH	80063	SM-C-633309	MOUNTING ASSY UOC:BB6	1
10	XBFHH	80063	SM-C-640023	MOUNTING ASSEMBLY UOC:3JQ	1
11	PAHZZ	80063	SM-B-633346	SPACER, SLEEVE UOC:BB6	4
11	XBHZZ	80063	SM-B-640142	SPACER, SLEEVE UOC:3JQ	4
12	XBHZZ	80063	SM-B-640141	SPACER, SLEEVE	4
13	XBHHH	80063	SM-B-633311	INSULATOR ASSEMBLY UOC:BB6	1
13	XBHHH	80063	SM-B-640028	INSULATOR ASSEMBLY UOC:3JQ	1
14	PAHZZ	80063	SM-B-640144	INSULATOR	1
15	PAHZZ	80063	SM-B-633347	BRACKET UOC:BB6	1
15	XBHZZ	80063	SM-D-640145	BRACKET, MOUNTING UOC:3JQ	1
16	XBHZZ	80063	SM-B-640146-2	ANGLE	1
17	PAHZZ	88044	AN960C10L	WASHER, FLAT	9
18	PAHZZ	96906	MS35338-138	WASHER, LOCK	15
19	PAHZZ	96906	MS35650-304	NUT, PLAIN, HEXAGON	4
20	PAHZZ	96906	MS35650-302	NUT, PLAIN, HEXAGON	2
21	PAHZZ	80063	SM-A-977601-303	WASHER, LOCK UOC:BB6	2
22	PAHZZ	88044	AN961-101	WASHER, FLAT UOC:BB6	2

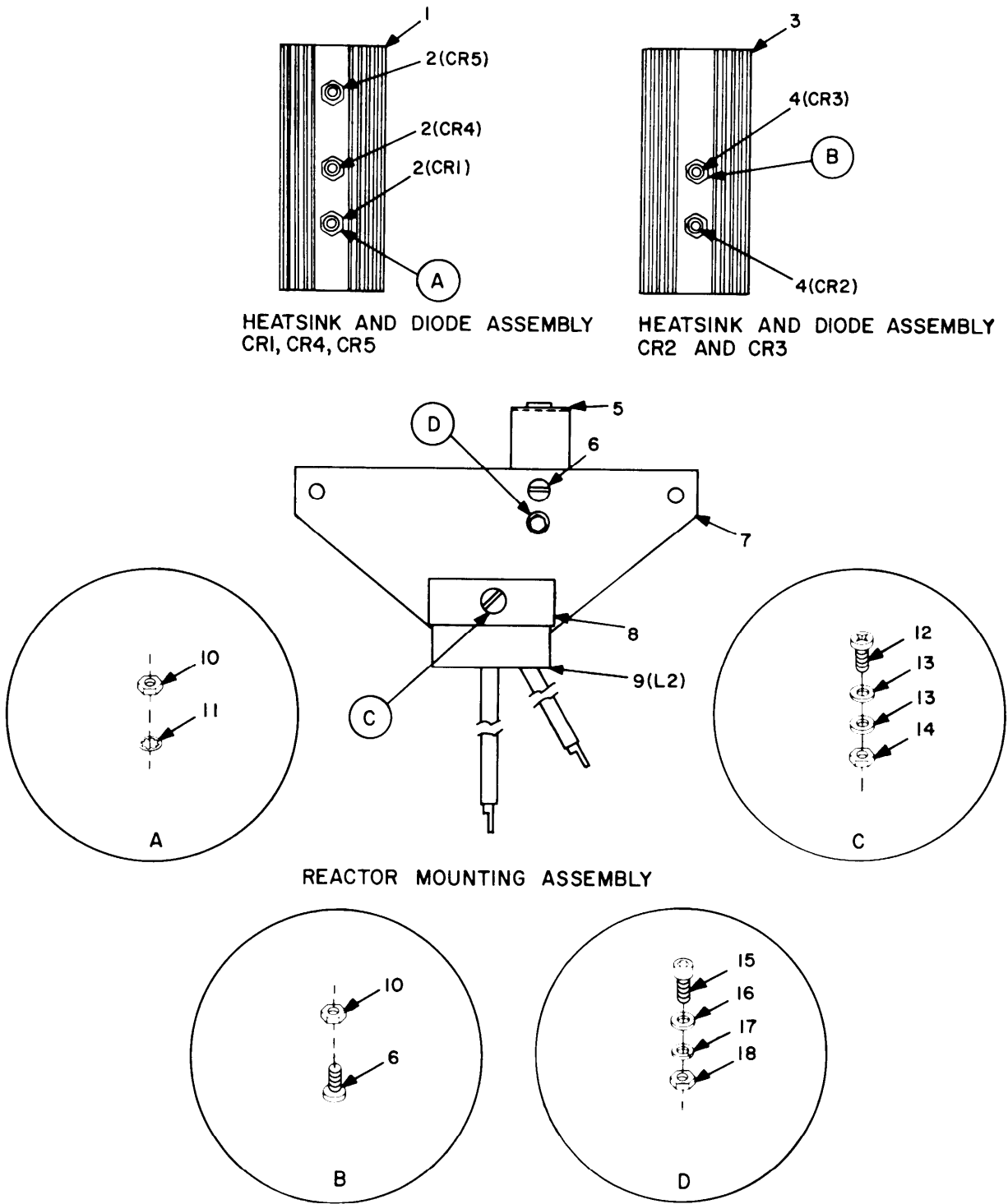
SECTION II

TM11-5820-765-34P-1

(1) ITEM NO	(2) SMR CODE	(3) FSCM	(4) PART NUMBER	(5) DESCRIPTION AND USABLE ON CODE (UOC)	(6) QTY
23	PAHZZ	96906	MS35649-2254	NUT, PLAIN, HEXAGON	13
24	PAHZZ	96906	MS35338-139	WASHER, LOCK	12
25	PAHZZ	88044	AN960C416	WASHER, FLAT	18
26	PAHZZ	96906	MS35307-308	SCREW, CAP, HEXAGON H	2
27	PAHZZ	96906	MS35307-306	SCREW, CAP, HEXAGON H	8
28	PAHZZ	96906	MS51958-64	SCREW, MACHINE	2
29	PAHZZ	96906	MS51958-66	SCREW, MACHINE	1
30	PAHZZ	96906	MS35649-285T	NUT, PLAIN, HEXAGON	5
31	PAHZZ	96906	MS35338-41	WASHER, LOCK	5
32	PAHZZ	88044	AN961-6T	WASHER, FLAT	5
33	PAHZZ	96906	MS35206-230	SCREW, MACHINE	5
34	PAHZZ	96906	MS90725-10	SCREW, CAP, HEXAGON H	2
35	PAHZZ	96906	MS45901-5	WASHER, FALT	2
36	PAHZZ	80063	SM-A-977599-2255	NUT, PLAIN, HEXAGON	2
37	PAHZZ	96906	MS35333-105	WASHER, LOCK	1

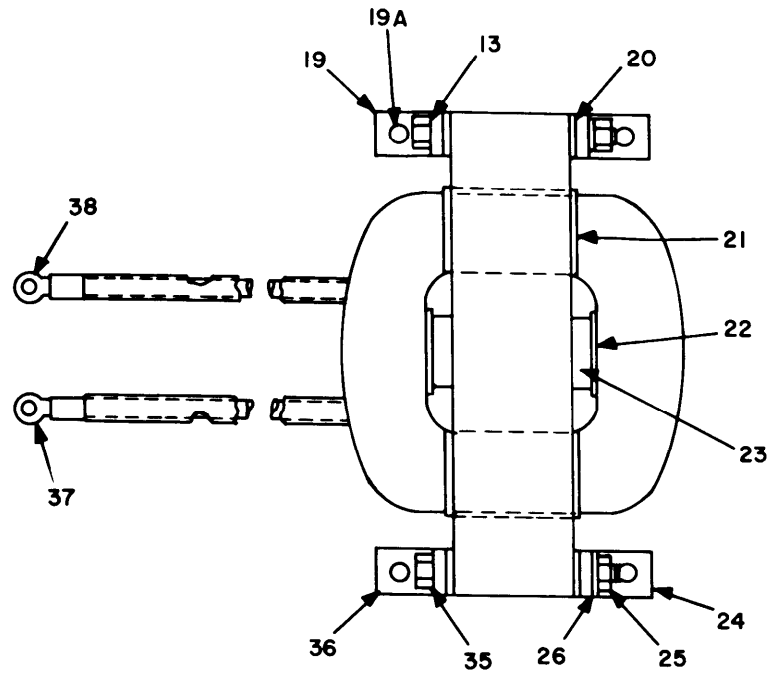
UOC:BB6

END OF FIGURE

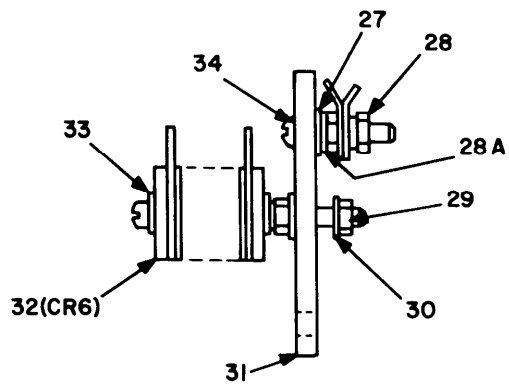


EL2XK038

Figure 12. Power supply PP-4763/GRC and PP-4763A/GRC, transformer frame subassemblies (Sheet 1 of 2).



REACTOR ASSEMBLY LI



TERMINAL BOARD AND
RECTIFIER ASSEMBLY

EL2XK039

Figure 12. Power supply PP-4763/GRC and PP-4763A/GRC, transformer frame subassemblies (Sheet 2 of 2).

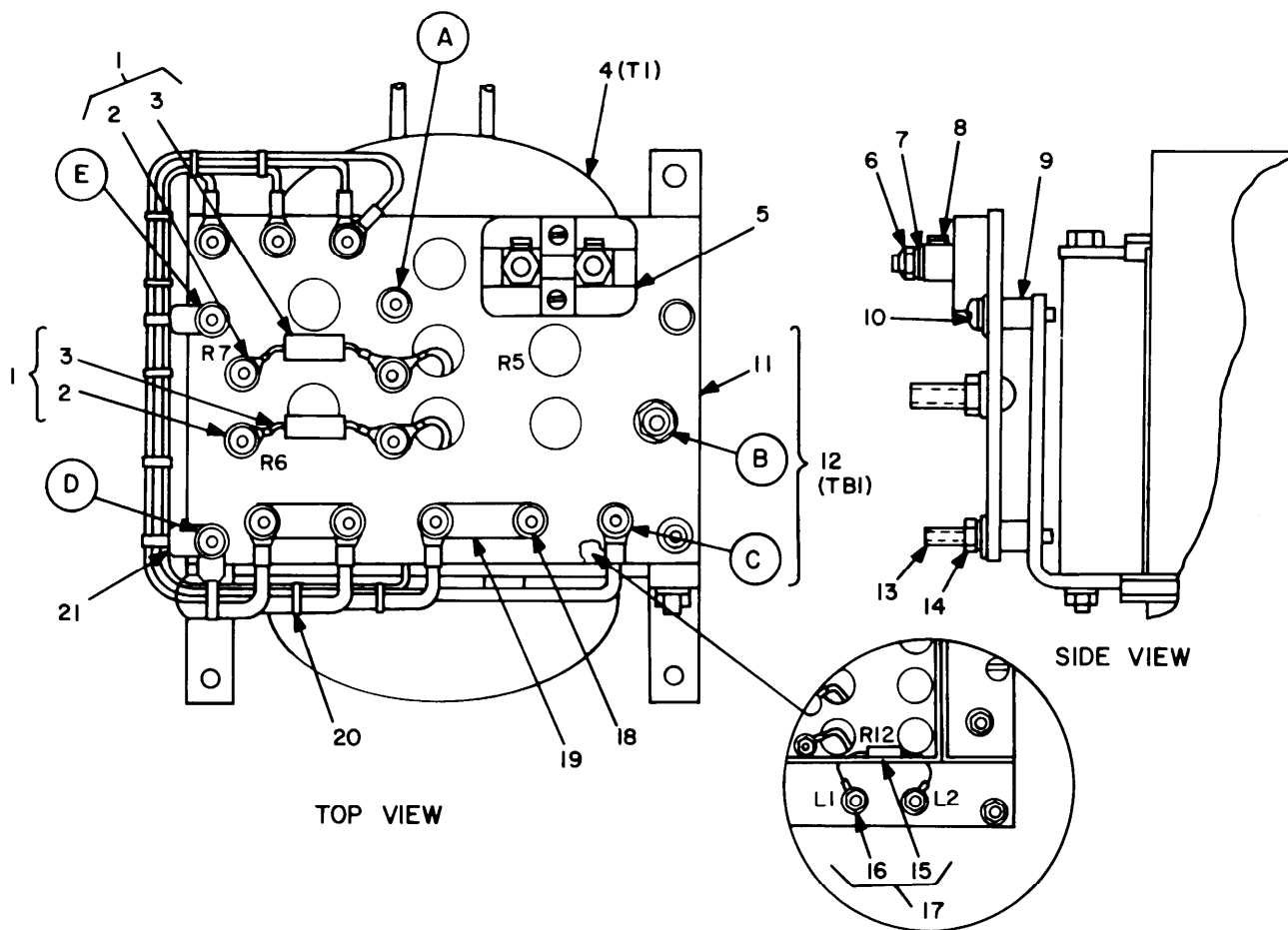
(1) ITEM NO	(2) SMR CODE	(3) FSCM	(4) PART NUMBER	(5) DESCRIPTION AND USABLE ON CODE (UOC)	(6) QTY
GROUP 00 POWER SUPPLY PP-4763/GRC AND PP-4763A/GRC TRANS- FORMER FRAME SUBASSEMBLIES					
FIGURE 12					
1	PAHZZ	80063	SM-D-640068-1	HEAT SINK, DIODE	1
2	PAHZZ	81349	JAN1N1186R	SEMICONDUCTOR DEVIC	3
3	XBHZZ	80063	SM-D-640068-2	HEAT SINK, DIODE	1
4	PAHZZ	81349	JAN1N1186	SEMICONDUCTOR DEVIC	2
5	PAHZZ	80063	SM-B-633340	BRACKET UOC: BB6	1
6	PAHZZ	96906	MS51958-66	SCREW, MACHINE	1
7	PAHZZ	80063	SM-B-633352	INSULATOR-SUPPORT UOC: BB6	1
8	PAHZZ	80063	SM-B-640104	INSULATOR	1
9	PAHZZ	80063	SM-C-633310	REACTOR ASSEMBLY UOC: BB6	1
9	XBHZZ	80063	SM-B-640024	REACTOR UOC: 3JQ	1
10	PAHZZ	96906	MS51968-2	NUT, PLAIN, HEXAGON	3
11	PAHZZ	96906	MS35335-89	WASHER, LOCK	3
12	PAHZZ	96906	MS51957-58	SCREW, MACHINE	4
13	PAHZZ	88044	AN960C416	WASHER, FLAT	2
14	PAHZZ	80063	SM-B-977603	NUT, SELF-LOCKING	1
15	PAHZZ	96906	MS51958-64	SCREW, MACHINE	1
16	PAHZZ	88044	AN960C10L	WASHER, FLAT	3
17	PAHZZ	96906	MS35338-138	WASHER, LOCK	2
18	PAHZZ	96906	MS35650-304	NUT, PLAIN, HEXAGON	2
19	XBHZZ	80063	SM-B-633339-1	BRACKET, ANGLE, FRONT UOC: BB6	1
19	XBHZZ	80063	SM-B-640101-1	BRACKET, ANGLE, FRONT UOC: 3JQ	1
19A	PAHZZ	88044	AN960-416	WASHER, FLAT UOC: BB6	8
20	PAHZZ	80063	SM-B-640149	INSULATOR-MAGNETIC UOC: BB6	4
21	PAHZZ	80063	SM-B-640091-2	INSULATOR, PLATE UOC: BB6	4
22	PAHZZ	80063	SM-B-640090	INSULATOR, PLATE UOC: BB6	2
23	PAHZZ	80063	SM-B-640089	WEDGE, MAGNET COIL UOC: BB6	2
24	XBHZZ	80063	SM-B-640102	BRACKET, ANGLE, REAR UOC: BB6	2
25	PAHZZ	96906	MS51967-2	NUT, PLAIN, HEXAGON UOC: BB6	4
26	PAHZZ	96906	MS35338-44	WASHER, LOCK UOC: BB6	4
27	XDHZZ	88044	AN961-10T	WASHER, FLAT	2
28	XBHZZ	96906	MS35650-305T	NUT, PLAIN, HEXAGON	2

SECTION II

TM11-5820-765-34P-1

(1) ITEM NO	(2) SMR CODE	(3) FSCM	(4) PART NUMBER	(5) DESCRIPTION AND USABLE ON CODE (UOC)	(6) QTY
29	XBHZZ	96906	MS35649-284	NUT, PLAIN, HEXAGON	1
30	PAHZZ	96906	MS35335-59	WASHER, LOCK	1
31	PAHZZ	80063	SM-B-640058	INSULATOR	1
32	XBHZZ	81483	KSA3T2AD	RECTIFIER	1
33	PAHZZ	88044	AN960C8	WASHER, FLAT	1
34	PAHZZ	80063	SM-B-640120-1	SCREW, SHOULDER	2
35	PAHZZ	96906	MS90726-21	SCREW, CAP, HEXAGON H UOC:BB6	4
36	PAHZZ	80063	SM-B-633339-3	BRACKET, ANGLE, FRONT UOC:BB6	1
36	XBHZZ	80063	SM-B-640101-2	BRACKET, ANGLE, FRONT UOC:3JQ	1
37	PAHZZ	96906	MS20659-111	TERMINAL, LUG UOC:BB6	1
38	PAHZZ	96906	MS20659-144	TERMINAL, LUG UOC:BB6	1

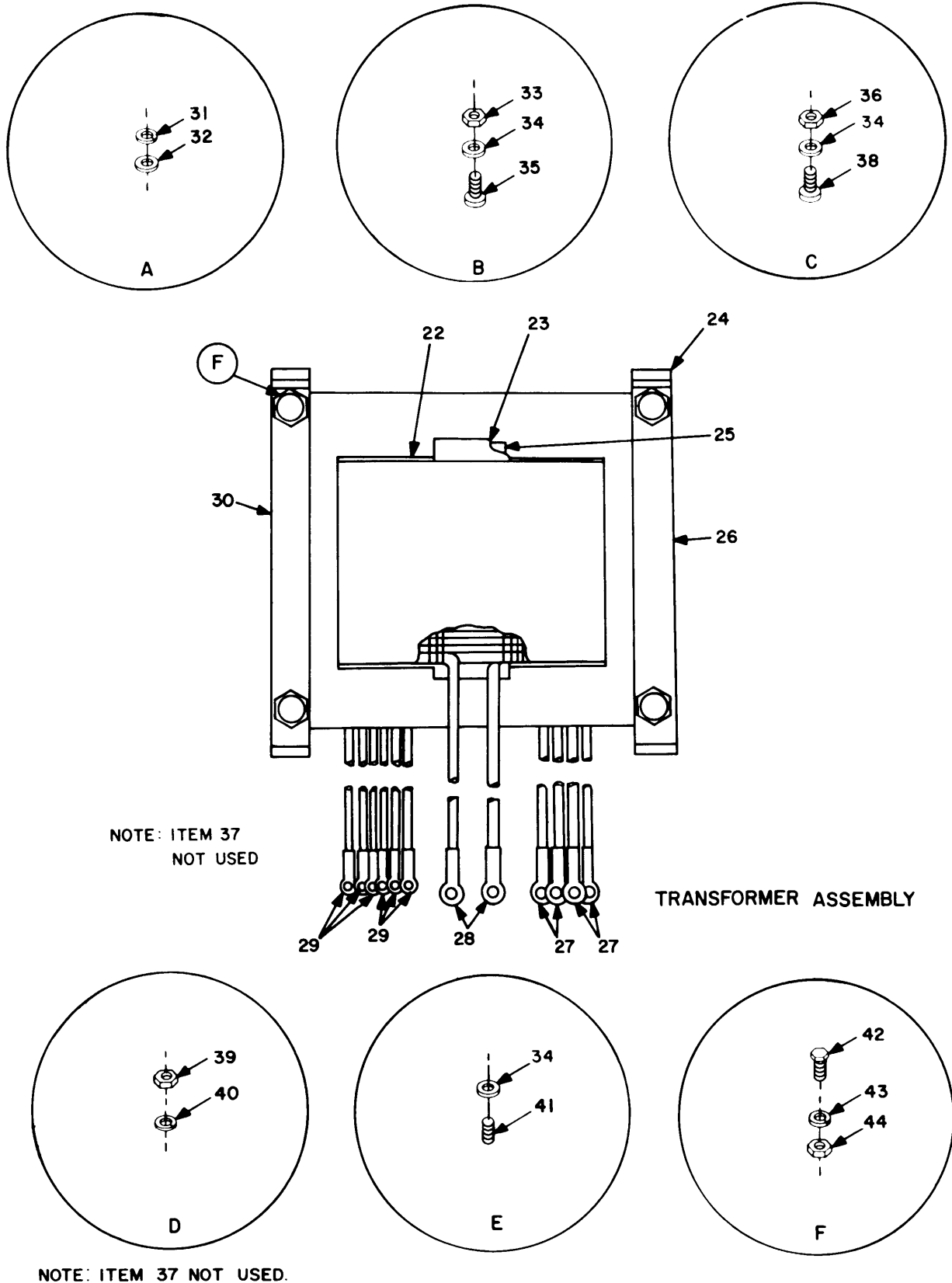
END OF FIGURE



SEE SHEET 2 FOR ENCIRCLED DETAILS.

EL2XK040

Figure 13. Power supply PP-4763/GRC and PP-4763A/GRC, transformer and terminal board assembly (Sheet 1 of 2).



EL2XK041

Figure 13. Power supply PP-4763/GRC and PP-4763A/GRC, transformer and terminal board assembly (Sheet 2 of 2).

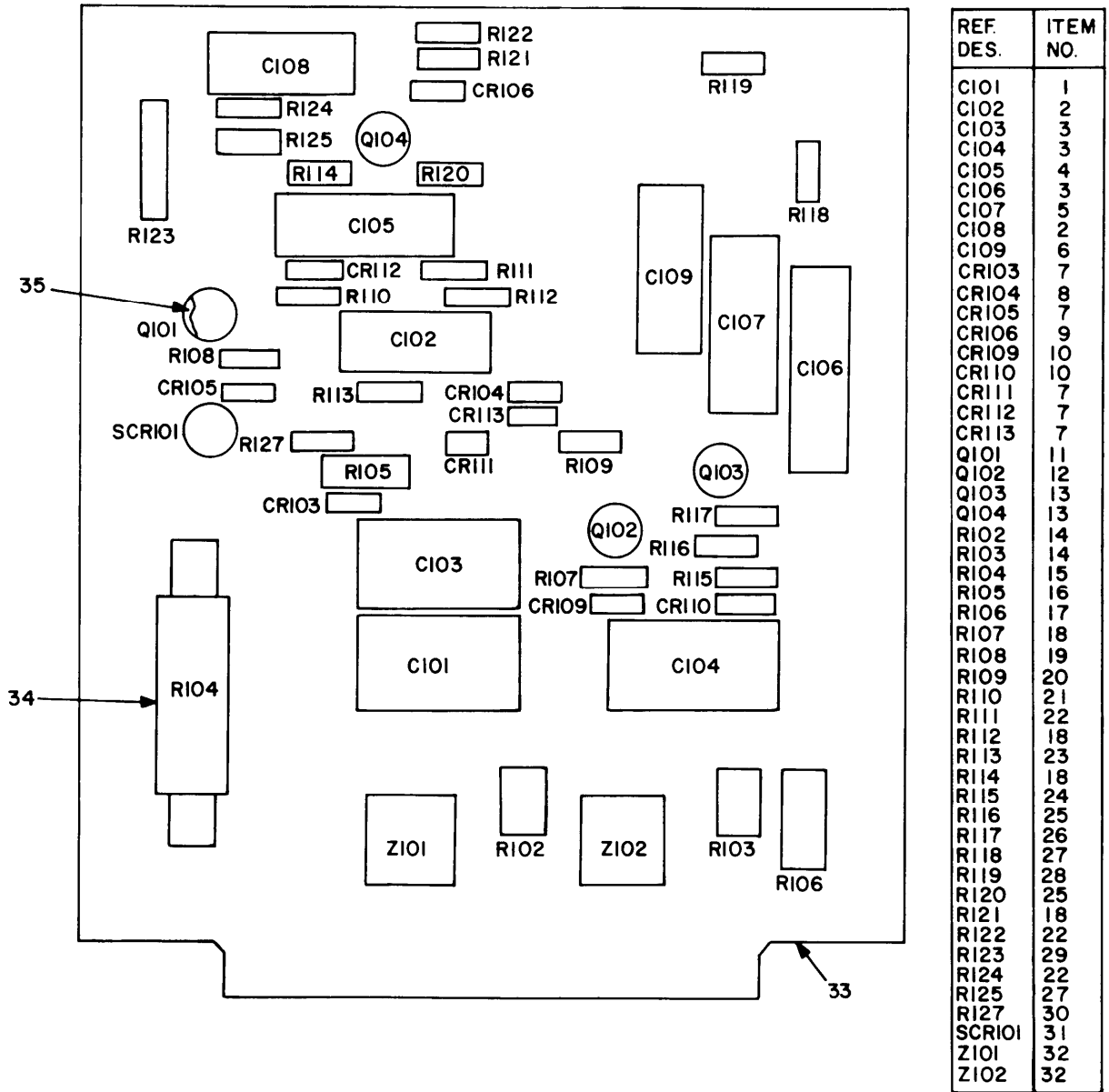
(1) ITEM NO	(2) SMR CODE	(3) FSCM	(4) PART NUMBER	(5) DESCRIPTION AND USABLE ON CODE (UOC)	(6) QTY
				GROUP 00 POWER SUPPLY PP-4763/GRC AND PP-4763A/GRC TRANS- FORMER AND TERMINAL BOARD ASSEMBLY	
				FIGURE 13	
1	PAHHH	80063	SM-B-640030	RESISTOR ASSEMBLY	2
2	PAHZZ	80063	SM-B-640048-2	TERMINAL, LUG	2
3	PAHZZ	81349	RL42S272GTX	RESISTOR, FIXED, FILM	1
4	PAHZZ	80063	SM-D-633331	TRANSFORMER, POWER UOC:BB6	1
4	PAHZZ	80063	SM-D-640086	TRANSFORMER, POWER UOC:3JQ	1
5	PAHZZ	96906	MS91586-4	SHUNT, INSTRUMENT UOC:BB6	1
6	PAHZZ	96906	MS21044C08	NUT, SELF-LOCKING, HE UOC:BB6	2
7	PAHZZ	96906	AN960C8	WASHER, FLAT UOC:BB6	2
8	PAHZZ	96906	MS51957-48	SCREW, MACHINE UOC:BB6	4
9	XBHZZ	80063	SM-B-640140-1	SPACER, SLEEVE	4
10	PAHZZ	96906	MS35207-267	SCREW, MACHINE	1
11	XBHZZ	80063	SM-C-633337	INSULATOR UOC:BB6	1
11	XBHZZ	80063	SM-C-640099	INSULATOR UOC:3JQ	1
12	PAHZZ	80063	SM-B-633313	TERMINAL BOARD UOC:BB6	1
12	XBHHH	80063	SM-B-640032	TERMINAL BOARD UOC:3JQ	1
13	PAHZZ	80063	SM-B-640139	STUD, CONTINUOUS THR	1
14	PAHZZ	96906	MS35650-305T	NUT, PLAIN, HEXAGON	14
15	XBHZZ	91637	RS500B22100F	RESISTOR, FIXED, WIRE UOC:3JQ	1
16	XBHZZ	14726	B4112B	TERMINAL, LUG UOC:3JQ	2
17	XBHHH	80063	SM-B-640031	RESISTOR ASSEMBLY UOC:3JQ	1
18	PAHZZ	96906	MS21044C3	NUT, SELF-LOCKING, HE	6
19	XBHZZ	80063	SM-B-633364	BUS BAR, LINK UOC:BB6	2
20	PAHZZ	96906	MS3367-5-9	STRAP, TIEDOWN, ELECT UOC:BB6	V
21	XBHZZ	80063	SM-B-640137-3	CABLE TIE UOC:BB6	3
22	XBHZZ	80063	SM-B-640091-1	INSULATOR, PLATE UOC:BB6	4
23	XBHZZ	80063	SM-B-640090	INSULATOR, PLATE UOC:BB6	2

SECTION II

TM11-5820-765-34P-1

(1) ITEM NO	(2) SMR CODE	(3) FSCM	(4) PART NUMBER	(5) DESCRIPTION AND USABLE ON CODE (UOC)	(6) QTY
24	XBHZZ	80063	SM-B-640088	BRACKET, ANGLE UOC:BB6	2
25	XBHZZ	80063	SM-B-640089	WEDGE, MAGNET COIL UOC:BB6	1
26	XBHZZ	80063	SM-B-633332-1	BRACKET, ANGLE UOC:BB6	1
27	PAHZZ	96906	MS25036-116	TERMINAL, LUG UOC:BB6	4
28	PAHZZ	96906	MS20659-107	TERMINAL, LUG UOC:BB6	2
29	PAHZZ	96906	MS25036-103	TERMINAL, LUG UOC:BB6	6
30	XBHZZ	80063	SM-B-633332-2	BRACKET, ANGLE UOC:BB6	1
31	XBHZZ	80063	SM-A-977602-100	WASHER, LOCK	14
32	XDHZZ	88044	AN961-10T	WASHER, FLAT UOC:BB6	18
33	PAHZZ	96906	MS51967-2	NUT, PLAIN, HEXAGON	3
34	PAHZZ	88044	AN960C10L	WASHER, FLAT	5
35	XBHZZ	96906	MS51958-67	SCREW, MACHINE	1
36	PAHZZ	96906	MS35650-302	NUT, PLAIN, HEXAGON	11
38	XBHZZ	80063	SM-B-640116	SCREW, SPLINED	11
39	PAHZZ	96906	MS35650-304	NUT, PLAIN, HEXAGON	2
40	PAHZZ	96906	MS35338-138	WASHER, LOCK	3
41	PAHZZ	80063	SM-B-640138	STUD, CONTINUOUS THR	2
42	XBHZZ	96906	MS35291-25	SCREW, CAP, HEXAGON UOC:BB6	4
43	PAHZZ	96906	MS35338-44	WASHER, LOCK UOC:BB6	4
44	XBHZZ	96906	MS35650-402	NUT, PLAIN, HEXAGON UOC:BB6	4

END OF FIGURE



EL2XK042

Figure 14. Power supply PP-4763/GRC and PP-4763A/GRC, circuit card assembly (PC101) (PP-4763/GRC).

SECTION II

TM11-5820-765-34P-1

(1) ITEM NO	(2) SMR CODE	(3) FSCM	(4) PART NUMBER	(5) DESCRIPTION AND USABLE ON CODE (UOC)	(6) QTY
GROUP 01 CIRCUIT CARD ASSEMBLY (PC101) (PP-4763/GRC)					
FIGURE 14					
1	PAHZZ	00098	C437ARF160	CAPACITOR, FIXED, ELE UOC: 3JQ	1
2	XBHZZ	81349	CTM014VBK	CAPACITOR, FIXED, UOC: 3JQ	2
3	PAHZZ	00098	C437ARH100	CAPACITOR, FIXED, ELE UOC: 3JQ	3
4	PAHZZ	81349	CTM224VBJ	CAPACITOR, FIXED, PLA UOC: 3JQ	1
5	PAHZZ	80063	SM-B-640171	CAPACITOR, FIXED UOC: 3JQ	1
6	XBHZZ	73445	C426ARG50	CAPACITOR, FIXED, ELE UOC: 3JQ	1
7	XBHZZ	81349	1N4003	SEMICONDUCTOR DEVIC UOC: 3JQ	5
8	XBHZZ	81349	1N937A	SEMICONDUCTOR UOC: 3JQ	1
9	PAHZZ	81349	JAN1N935	SEMICONDUCTOR DEVIC UOC: 3JQ	1
10	XBHZZ	06751	UZ720	SEMICONDUCTOR UOC: 3JQ	2
11	PAHZZ	19200	10554157	TRANSISTOR UOC: 3JQ	1
12	PAHZZ	81349	JAN2N1711	TRANSISTOR UOC: 3JQ	1
13	PAHZZ	81349	JAN2N2905A	TRANSISTOR UOC: 3JQ	2
14	XBHZZ	81349	RCR20G2R7JS	RESISTOR, FIXED, COMP UOC: 3JQ	2
15	PAHZZ	81349	RW68V750	RESISTOR, FIXED, WIRE UOC: 3JQ	1
16	XBHZZ	81349	M22684-02-0098	RESISTOR, FIXED, FILM UOC: 3JQ	1
17	XBHZZ	81349	M22684-02-0088	RESISTOR, FIXED, FILM UOC: 3JQ	1
18	PAHZZ	81349	RLR20C1001GR	RESISTOR, FIXED, FILM UOC: 3JQ	4
19	XBHZZ	81349	RLR20C4700GR	RESISTOR, FIXED, FILM UOC: 3JQ	1
20	PAHZZ	81349	RLR20C51R0GR	RESISTOR, FIXED, FILM UOC: 3JQ	1
21	PAHZZ	81349	RCR20G224JS	RESISTOR, FIXED, FOMP UOC: 3JQ	1
22	XBHZZ	81349	M22684-02-0114	RESISTOR, FIXED, FILM UOC: 3JQ	3
23	XBHZZ	81349	M22684-02-0088	RESISTOR, FIXED, FILM UOC: 3JQ	1

SECTION II

TM11-5820-765-34P-1

(1) ITEM NO	(2) SMR CODE	(3) FSCM	(4) PART NUMBER	(5) DESCRIPTION AND USABLE ON CODE (UOC)	(6) QTY
24	PAHZZ	81349	RLR20C5600GR	RESISTOR, FIXED, FILM UOC: 3JQ	1
25	XBHZZ	81349	M22684-02-0112	RESISTOR, FIXED, FILM UOC: 3JQ	2
26	XBHZZ	81349	M22684-02-0122	RESISTOR, FIXED, FILM UOC: 3JQ	1
27	PAHZZ	81349	RLR20C3300GS	RESISTOR, FIXED, FILM UOC: 3JQ	2
28	PAHZZ	81349	RLR20C6800GR	RESISTOR, FIXED, FILM UOC: 3JQ	1
29	XBHZZ	96791	261BP1K	RESISTOR, VARIABLE UOC: 3JQ	1
30	PAHZZ	81349	RLR20C1000GR	RESISTOR, FIXED, FILM UOC: 3JQ	1
31	PAHZZ	09214	C6A	SEMICONDUCTOR DEVIC UOC: 3JQ	1
32	PAHZZ	81483	18DB2A	RECTIFIER, SEMICONDU UOC: 3JQ	2
33	PAHZZ	02294	M111545-1	PRINTED CIRCUIT BOA UOC: 3JQ	1
34	XBHZZ	80063	M109197-1	HEAT SINK, RESISTOR UOC: 3JQ	1
35	PAHZZ	70117	P33A20	INSULATOR, DISK UOC: 3JQ	5

END OF FIGURE

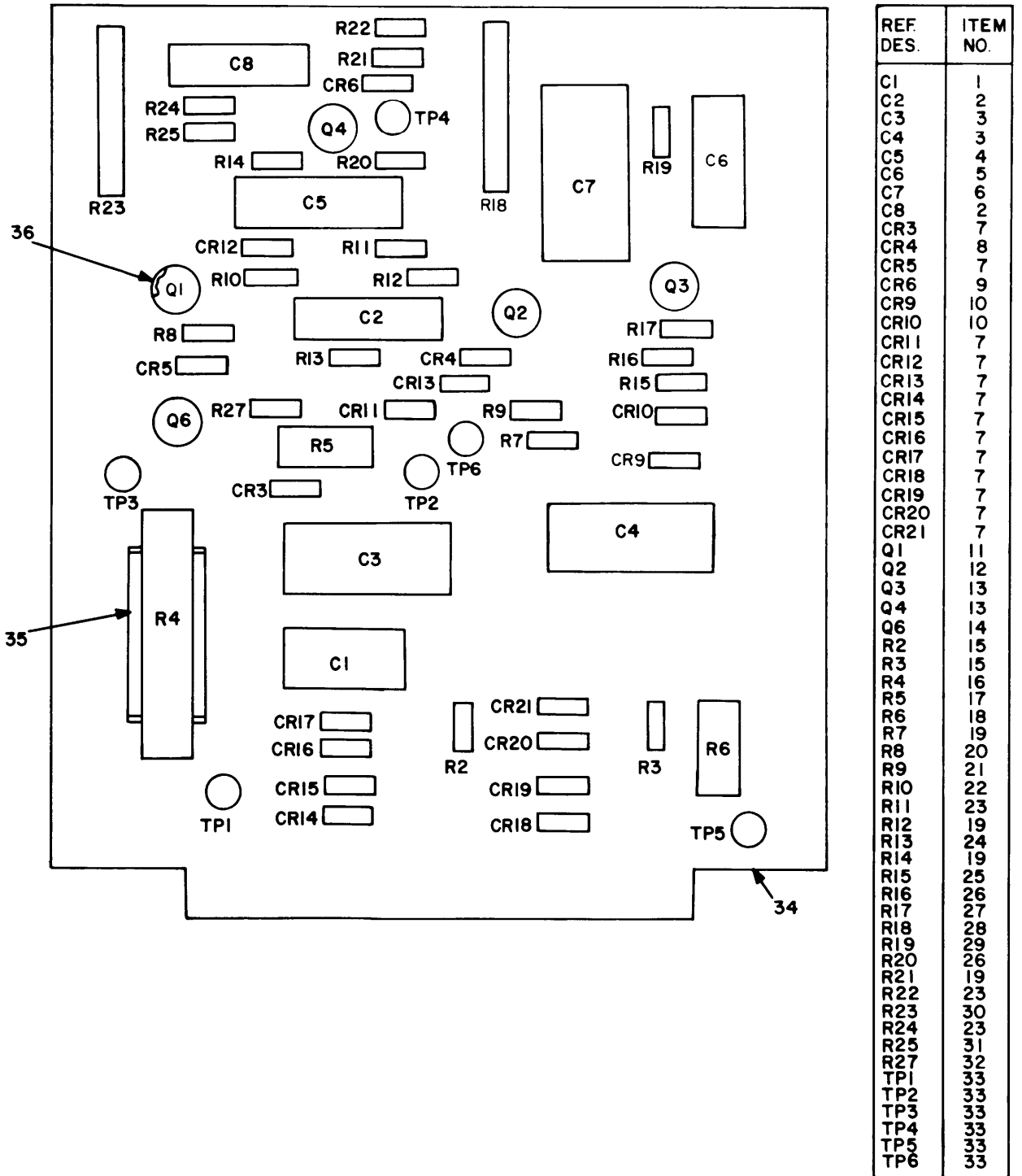


Figure 15. Power supply PP-4763/GRC and PP-4763A/GRC, circuit card assembly (A1) (PP-4763A/GRC).

SECTION II

TM11-5820-765-34P-1

(1) ITEM NO	(2) SMR CODE	(3) FSCM	(4) PART NUMBER	(5) DESCRIPTION AND USABLE ON CODE (UOC)	(6) QTY
GROUP 01 CIRCUIT CARD ASSEMBLY (A1) (PP-4763A/GRC)					
FIGURE 15					
1	XBHZZ	81349	CL65CG181MP3	CAPACITOR, FIXED, ELE UOC: BB6	1
2	PAHZZ	81349	CTM104VBJ	CAPACITOR, FIXED, PLA UOC: BB6	2
3	PAHZZ	56699	3073GG101T063JPB	CAPACITOR, FIXED, ELE UOC: BB6	2
4	PAHZZ	81349	CTM224VBJ	CAPACITOR, FIXED, PLA UOC: BB6	1
5	XBHZZ	81349	M39003-01-2071	CAPACITOR, FIXE UOC: BB6	1
6	PAHZZ	81349	M39022-01-1621	CAPACITOR, FIXED, MET UOC: BB6	1
7	PAHZZ	81349	JAN1N3611	SEMICONDUCTOR DEVIC UOC: BB6	13
8	PAHZZ	81349	JAN1N937B	SEMICONDUCTOR DEVIC UOC: BB6	1
9	PAHZZ	81349	JAN1N935B	SEMICONDUCTOR DEVIC UOC: BB6	1
10	PAHZZ	81349	JAN1N4965	SEMICONDUCTOR DEVIC UOC: BB6	2
11	PAHZZ	81349	JAN2N491A	TRANSISTOR UOC: BB6	1
12	PAHZZ	81349	JAN2N1711	TRANSISTOR UOC: BB6	1
13	PAHZZ	81349	JAN2N2905A	TRANSISTOR UOC: BB6	2
14	PAHZZ	81349	JAN2N2324	SEMICONDUCTOR DEVIC UOC: BB6	1
15	PAHZZ	81349	RCR20G4R7JS	RESISTOR, FIXED, COMP UOC: BB6	2
16	PAHZZ	81349	RW68V750	RESISTOR, FIXED, WIRE UOC: BB6	1
17	XBHZZ	81349	M22684-04-0098	RESISTOR, FIXED, FILM UOC: BB6	1
18	XBHZZ	81349	M22684-04-0088	RESISTOR, FIXED, FILM UOC: BB6	1
19	PAHZZ	81349	RLR20C1001GR	RESISTOR, FIXED, FILM UOC: BB6	4
20	XBHZZ	81349	M22684-02-0082	RESISTOR, FIXED, FILM UOC: BB6	1
21	PAHZZ	81349	RLR20C51R0GR	RESISTOR, FIXED, FILM UOC: BB6	1
22	PAHZZ	81349	RCR20G224JS	RESISTOR, FIXED, COMP UOC: BB6	1
23	XBHZZ	81349	RLR20C2201GR	RESISTOR, FIXED, FILM UOC: BB6	3

SECTION II

TM11-5820-765-34P-1

(1) ITEM NO	(2) SMR CODE	(3) FSCM	(4) PART NUMBER	(5) DESCRIPTION AND USABLE ON CODE (UOC)	(6) QTY
24	XBHZZ	81349	RLR20C6200GR	RESISTOR, FIXED, FILM UOC:BB6	1
25	PAHZZ	81349	M22684-02-0086	RESISTOR, FIXED, FILM UOC:BB6	1
26	XBHZZ	81349	M22684-02-0112	RESISTOR, FIXED, FILM UOC:BB6	2
27	XBHZZ	81349	RLR20C3301GR	RESISTOR, FIXED, FILM UOC:BB6	1
28	PAHZZ	81349	M39015/1-005PP	RESISTOR, VARIABLE, W UOC:BB6	1
29	PAHZZ	81349	RLR20C6800GR	RESISTOR, FIXED, FILM UOC:BB6	1
30	PAHZZ	81349	M39015/1-004PP	RESISTOR, VARIABLE, W UOC:BB6	1
31	PAHZZ	81349	RLR20C3300GS	RESISTOR, FIXED, FILM UOC:BB6	1
32	PAHZZ	81349	RLR20C1000GR	RESISTOR, FIXED, FILM UOC:BB6	1
33	PAHZZ	80063	SM-B-633358	JACK, TIP UOC:BB6	6
34	XAHZZ	80063	SM-D-633336	PRINTED WIRING BOAR UOC:BB6	1
35	XBHZZ	80063	SM-B-640053	HEAT SINK, RESISTOR UOC:BB6	1
36	PAHZZ	80045	813360	PAD TRANSISTOR UOC:BB6	5

END OF FIGURE

NATIONAL STOCK NUMBER AND PART NUMBER INDEX

		NATIONAL STOCK NUMBER INDEX			
STOCK NUMBER	FIG.	ITEM	STOCK NUMBER	FIG.	ITEM
4140-01-169-1697	3	5	5940-00-114-1305	13	27
5995-01-147-4605	7	2	5905-00-114-5393	14	21
5305-00-001-4872	9	26		15	22
	12	34	5940-00-115-2677	12	38
5305-00-001-4873	7	15	5940-00-115-2678	12	37
5995-00-008-7459	2	31	5961-00-115-8469	8	30
5999-00-008-7479	8	19	5961-00-116-6553	14	11
5970-00-009-0200	2	11	5905-00-126-6705	15	15
5310-00-019-0669	11	37	5950-00-133-8940	11	2
5310-00-019-0672	2	29	5950-00-133-8953	13	4
5305-00-021-3616	2	41	5310-00-136-1472	2	54
5905-00-039-9528	15	30		8	13
5310-00-045-4007	2	53		9	13
	11	31		11	32
5905-00-048-5165	2	2	5310-00-141-1795	2	39
5305-00-051-0227	7	12		12	19A
5961-00-054-0046	14	12	5940-00-143-4771	6	4
	15	12		13	29
5305-00-054-5649	2	57	5940-00-143-4794	8	15
	5	40		10	14
5305-00-054-5651	7	27	5310-00-167-0801	7	21
5305-00-054-6655	3	11	5310-00-167-0803	2	47
5305-00-054-6656	3	7	5310-00-167-0812	2	19
5305-00-054-6670	5	22		5	36
5305-00-054-6673	13	8		6	13
5305-00-054-6674	7	28		8	46
5305-00-059-3659	5	35		10	20
	7	20		11	17
	8	23		12	16
	10	19		13	34
5305-00-059-3660	2	20	5310-00-167-0818	2	9
	6	8	5820-00-179-3149	2	10
	10	18	5820-00-179-3150	7	5
	11	28	5310-00-184-8977	8	51
	12	15	5307-00-187-6421	13	41
5305-00-059-3661	2	17	5307-00-187-6423	13	13
	6	12	5905-00-194-0481	14	20
	7	24		15	21
5305-00-059-3662	2	37	5905-00-196-7213	14	28
	8	45		15	29
	11	29	6625-00-197-2365	13	5
	12	6	5940-00-204-8990	8	14
5305-00-059-3665	8	35	5305-00-207-8253	9	46
5305-00-059-3666	8	39		11	26
5305-00-066-7328	4	1	5310-00-208-9255	2	38
	5	39		7	25
5305-00-071-2241	11	34		13	18
5905-00-099-9596	15	28	5925-00-220-3530	5	2
5975-00-111-3208	13	20	5999-00-220-5239	14	33
5940-00-113-9824	13	28	5961-00-226-5134	15	8

NATIONAL STOCK NUMBER AND PART NUMBER INDEX

		NATIONAL STOCK NUMBER INDEX			
STOCK NUMBER	FIG.	ITEM	STOCK NUMBER	FIG.	ITEM
5961-00-227-9770	15	10	5340-00-801-2957	6	11
5310-00-245-3615	2	45		10	11
5310-00-245-8825	10	23	5961-00-833-3042	12	4
5950-00-246-4524	13	4	5910-00-835-2953	15	2
5310-00-250-9477	9	33	5910-00-835-2961	14	4
	11	23		15	4
5310-00-261-8278	9	20	5935-00-849-4578	8	10
5310-00-264-1390	7	35	5935-00-850-5593	8	11
5970-00-281-0899	10	7	5961-00-869-4857	14	31
5910-00-323-9325	15	6	5999-00-878-6660	2	10
5905-00-100-4868	9	44	5910-00-878-8512	9	5
5310-00-410-3016	9	11	5310-00-880-5976	3	9
5310-00-410-3025	5	31		5	28
	9	17	5305-00-889-3000	11	33
	13	14	5905-00-894-0174	9	44
5961-00-410-5128	14	32	5961-00-926-2569	15	11
4920-00-420-9449	7	9	5905-00-926-8706	14	30
5930-00-519-8144	4	11		15	32
5310-00-531-9515	10	8	5905-00-926-8708	14	18
	11	25		15	19
	12	13	5310-00-929-6395	3	8
5910-00-534-7737	15	3		5	27
5905-00-577-3656	5	6	5310-00-933-8118	5	42
5905-00-577-7341	5	14		8	42
5310-00-582-5965	12	26	5310-00-933-8119	2	42
	13	43		5	24
5310-00-614-3552	12	30		7	30
6625-00-618-9291	5	3	5310-00-933-8120	2	18
5306-00-637-9674	2	48		5	37
6625-00-643-1792	5	5		6	9
5310-00-685-3744	2	43		7	22
	5	23		8	49
	7	29		10	21
	9	40		11	18
	12	33		12	17
	13	7		13	40
5305-00-701-5061	2	44	5310-00-933-8121	2	40
5305-00-702-4523	9	35		9	34
	11	27		10	22
5310-00-754-4337	11	35		11	24
5310-00-761-6882	2	26	5310-00-934-9747	2	52
	12	25	5310-00-934-9748	5	43
	13	33		8	41
5305-00-763-6963	5	26	5310-00-934-9751	8	48
5310-00-768-0319	12	10		11	20
5305-00-768-0336	2	51		13	36
5905-00-775-0633	15	25	5310-00-934-9759	2	28
5310-00-782-1349	2	50		5	25
	5	41		7	31
	8	43		9	39

NATIONAL STOCK NUMBER AND PART NUMBER INDEX

		NATIONAL STOCK NUMBER INDEX			
STOCK NUMBER	FIG.	ITEM	STOCK NUMBER	FIG.	ITEM
5310-00-934-9761	3	10			
5310-00-934-9765	2	36			
	5	38			
	6	10			
	7	23			
	8	40			
	10	15			
	11	19			
	12	18			
	13	39			
5310-00-934-9766	7	33			
5961-00-935-0129	12	2			
5310-00-939-0903	9	10			
5310-00-939-2653	2	21			
5905-00-940-2751	14	24			
5310-00-942-5109	2	22			
	2	27			
	8	37			
	9	8			
	12	11			
5310-00-942-5110	10	16			
5961-00-949-1440	14	13			
	15	13			
5961-00-957-6865	9	3			
	15	7			
5905-00-968-4890	10	10			
5935-00-972-4003	15	33			
5310-00-974-6623	2	46			
5905-00-975-1131	14	15			
	15	16			
5310-00-982-4999	2	49			
	7	26			
5310-00-982-6813	2	7			
	5	30			
	5	39A			
5310-00-982-6814	2	56			
	7	32			
	9	38			
	13	6			
5305-00-984-4992	5	29			
5305-00-984-4993	9	23			
5961-00-985-8929	15	14			
5961-00-990-3049	15	9			
5305-00-993-1851	13	10			
5820-00-999-7292	15	36			
5905-01-058-7628	13	3			
5905-01-130-8968	14	27			
	15	31			

NATIONAL STOCK NUMBER AND PART NUMBER INDEX

FSCM	PART NUMBER	PART NUMBER INDEX		FIG.	ITEM
		STOCK NUMBER			
74193	AM12MG3-25-77			5	2
88044	AN960-10	5310-00-167-0818		2	9
88044	AN960-416	5310-00-141-1795		2	39
				12	19A
88044	AN960C10	5310-00-167-0801		7	21
96906	AN960C10L	5310-00-167-0812		2	19
				5	36
				6	13
				8	46
				10	20
				11	17
				12	16
				13	34
88044	AN960C416	5310-00-531-9515		10	8
				11	25
				12	13
88044	AN960C516	5310-00-167-0803		2	47
88044	AN960C8	5310-00-685-3744		2	43
				5	23
				7	29
				9	40
				12	33
				13	7
88044	AN961-10	5310-00-264-1390		7	35
88044	AN961-10T			2	25
				5	33
				9	21
				12	27
				13	32
88044	AN961-101			11	22
88044	AN961-4T			2	34
88044	AN961-416T			2	55
				8	38
				9	15
88044	AN961-6T	5310-00-136-1472		2	54
				8	13
				9	13
				11	32
81541	APL53-518-1	5925-00-220-3530		5	2
06045	A05517005			5	4
03481	A10-130			4	4
				6	2
				8	33
				10	1
03481	A10-230			4	10
				8	47
14726	B4112B			13	16
81349	CL65CG181MP3			15	1
81349	CP12A1KC474K			6	5
				9	5
81349	CQ09A1MB475K3			5	7

NATIONAL STOCK NUMBER AND PART NUMBER INDEX

FSCM	PART NUMBER	PART NUMBER INDEX	
		STOCK NUMBER	FIG. ITEM
81349	CTM014VBK		14 2
81349	CTM104VBJ	5910-00-835-2953	15 2
81349	CTM224VBJ	5910-00-835-2961	14 4
			15 4
81349	C003H0F3-12-0625		8 16
73445	C426ARG50		14 6
00098	C437ARF160		14 1
00098	C437ARH100		14 3
09214	C6A	5961-00-869-4857	14 31
80063	ES-C-202264		2 6
02294	GF7390-1		8 25
81349	JAN1N1186	5961-00-833-3042	12 4
81349	JAN1N1186R	5961-00-935-0129	12 2
81349	JAN1N3611	5961-00-957-6865	9 3
			9 3
			15 7
81349	JAN1N4965	5961-00-227-9770	15 10
81349	JAN1N935		14 9
81349	JAN1N935B	5961-00-990-3049	15 9
81349	JAN1N937B	5961-00-226-5134	15 8
81349	JAN2N1711	5961-00-054-0046	14 12
			15 12
81349	JAN2N1910W		9 16
81349	JAN2N2027	5961-00-115-8469	8 30
81349	JAN2N2324	5961-00-985-8929	15 14
81349	JAN2N2905A	5961-00-949-1440	14 13
			15 13
81349	JAN2N491A	5961-00-926-2569	15 11
81483	KSA3T2AD		12 32
81349	MR36W050DCVVR	6625-00-643-1792	5 5
81349	MR36W080DCAAR	6625-00-618-9291	5 3
96906	MS15795-804	5310-00-782-1349	2 50
			5 41
			8 43
96906	MS15795-806	5310-00-880-5976	3 9
			5 28
96906	MS16106-1	5930-00-519-8144	4 11
96906	MS16214-21		7 34
96906	MS16228-4C	5310-00-245-8825	10 23
96906	MS18012-5	5340-00-801-2957	6 11
			10 11
96906	MS20659-107	5940-00-113-9824	13 28
96906	MS20659-111	5940-00-115-2678	12 37
96906	MS20659-144	5940-00-115-2677	12 38
96906	MS21044C04	5310-00-982-4999	2 49
			7 26
96906	MS21044C06	5310-00-982-6813	2 7
			5 30
			5 39A
96906	MS21044C08	5310-00-982-6814	2 56
			7 32

NATIONAL STOCK NUMBER AND PART NUMBER INDEX

FSCM	PART NUMBER	PART NUMBER INDEX		ITEM
		STOCK NUMBER	FIG.	
96906	MS21044C08	5310-00-982-6814	9	38
			13	6
96906	MS21044C3	5310-00-208-9255	2	38
			7	25
			13	18
96906	MS24693C27	5305-00-066-7328	4	1
			5	39
96906	MS24693C272	5305-00-051-0227	7	12
96906	MS25036-103	5940-00-143-4771	6	4
			13	29
96906	MS25036-111	5940-00-204-8990	8	14
96906	MS25036-112	5940-00-143-4794	8	15
			10	14
96906	MS25036-116	5940-00-114-1305	13	27
96906	MS25043-22C		8	8
96906	MS3102R22-2S	5935-00-850-5593	8	11
96906	MS3367-5-9	5975-00-111-3208	13	20
96906	MS35206-230	5305-00-889-3000	11	33
96906	MS35206-232	5305-00-984-4992	5	29
96906	MS35206-233	5305-00-984-4993	9	23
96906	MS35207-267	5305-00-993-1851	13	10
96906	MS35291-25		13	42
96906	MS35307-305	5305-00-021-3616	2	41
96906	MS35307-306	5305-00-702-4523	9	35
			11	27
96906	MS35307-308	5305-00-207-8253	9	46
			11	26
96906	MS35307-336	5306-00-637-9674	2	48
96906	MS35333-105	5310-00-019-0669	11	37
96906	MS35333-107	5310-00-019-0672	2	29
96906	MS35335-59	5310-00-614-3552	12	30
96906	MS35335-75	5310-00-942-5109	2	27
96906	MS35335-86	5310-00-939-0903	9	10
96906	MS35335-88	5310-00-942-5110	10	16
96906	MS35335-89	5310-00-942-5109	2	22
			8	37
			9	8
			12	11
96906	MS35338-100		5	32
			9	20
96906	MS35338-135	5310-00-933-8118	5	42
			8	42
96906	MS35338-136	5310-00-929-6395	3	8
			5	27
96906	MS35338-137	5310-00-933-8119	2	42
			5	24
			7	30
96906	MS35338-138	5310-00-933-8120	2	18
			5	37
			6	9
			7	22

NATIONAL STOCK NUMBER AND PART NUMBER INDEX

FSCM	PART NUMBER	PART NUMBER INDEX		ITEM
		STOCK NUMBER	FIG.	
96906	MS35338-138	5310-00-933-8120	8	49
			10	21
			11	18
			12	17
			13	40
96906	MS35338-139	5310-00-933-8121	2	40
			9	34
			10	22
			11	24
			11	24
96906	MS35338-140	5310-00-974-6623	2	46
96906	MS35338-41	5310-00-045-4007	2	53
96906	MS35338-44	5310-00-582-5965	11	31
			12	26
96906	MS35338-98	5310-00-184-8977	13	43
			8	51
96906	MS35649-2254	5310-00-250-9477	9	33
96906	MS35649-2314	5310-00-245-3615	11	23
			2	45
96906	MS35649-244	5310-00-934-9748	5	43
96906	MS35649-262	5310-00-934-9747	8	41
			2	52
96906	MS35649-264	5310-00-934-9761	3	10
96906	MS35649-265T	5310-00-410-3016	9	11
96906	MS35649-284	5310-00-934-9759	2	28
			5	25
			7	31
			9	39
			12	29
			11	30
			8	48
			11	20
			13	36
			2	36
96906	MS35649-285T	5310-00-934-9751	5	38
			6	10
			7	23
			8	40
			10	15
			11	19
			12	18
			13	39
			7	33
			5	31
96906	MS35650-302	5310-00-934-9765	9	17
			12	28
96906	MS35650-305	5310-00-934-9766	13	14
			7	33
96906	MS35650-305T	5310-00-410-3025	5	31
96906	MS35650-304	5310-00-934-9765	9	17
			12	28
96906	MS35650-402	5310-00-761-6882	13	14
			13	44
96906	MS35690-402	5310-00-761-6882	2	26
96906	MS36649-262		9	19
96906	MS36649-265T		9	17A
96906	MS45901-5	5310-00-754-4337	11	35

NATIONAL STOCK NUMBER AND PART NUMBER INDEX

FSCM	PART NUMBER	PART NUMBER INDEX	
		STOCK NUMBER	FIG. ITEM
96906	MS51957-15	5305-00-054-5649	2 57
			5 40
96906	MS51957-17	5305-00-054-5651	7 27
96906	MS51957-18		8 44
96906	MS51957-31	5305-00-054-6655	3 11
96906	MS51957-32	5305-00-054-6656	3 7
96906	MS51957-45	5305-00-054-6670	5 22
96906	MS51957-48	5305-00-054-6673	13 8
96906	MS51957-49	5305-00-054-6674	7 28
96906	MS51957-58		12 12
96906	MS51958-45	5305-00-701-5061	2 44
96906	MS51958-63	5305-00-059-3659	5 35
			7 20
			8 23
			10 19
96906	MS51958-64	5305-00-059-3660	2 20
			6 8
			10 18
			11 28
			12 15
96906	MS51958-65	5305-00-059-3661	2 17
			6 12
			7 24
96906	MS51958-66	5305-00-059-3662	2 37
			8 45
			11 29
			12 6
96906	MS51958-67		13 35
96906	MS51958-69	5305-00-059-3665	8 35
96906	MS51958-70	5305-00-059-3666	8 39
96906	MS51959-17	5305-00-768-0336	2 51
96906	MS51959-28	5305-00-763-6963	5 26
96906	MS51967-2	5310-00-761-6882	12 25
			13 33
96906	MS51968-2	5310-00-768-0319	12 10
96906	MS51969-1	5310-00-939-2653	2 21
			8 36
96906	MS90725-10	5305-00-071-2241	11 34
96906	MS90726-21		12 35
96906	MS91586-4	6625-00-197-2365	13 5
80063	M109197-1		14 34
02294	M111545-1	5999-00-220-5239	14 33
80063	M111586-1		9 24
81349	M22684-02-0010		9 28
81349	M22684-02-0036		9 6
81349	M22684-02-0082		15 20
81349	M22684-02-0086	5905-00-775-0633	15 25
81349	M22684-02-0088		14 17
			14 23
81349	M22684-02-0098		14 16
81349	M22684-02-0112		14 25

NATIONAL STOCK NUMBER AND PART NUMBER INDEX

FSCM	PART NUMBER	PART NUMBER INDEX	
		STOCK NUMBER	FIG. ITEM
81349	M22684-02-0112		15 26
81349	M22684-02-0114		14 22
81349	M22684-02-0118		5 13
81349	M22684-02-0122		14 26
81349	M22684-04-0088		15 18
81349	M22684-04-0098		15 17
81349	M39003-01-2071		15 5
81349	M39015/1-004PP	5905-00-039-9528	15 30
81349	M39015/1-005PP	5905-00-099-9596	15 28
81349	M39022-01-1621	5910-00-323-9325	15 6
70117	P33A20		14 35
81349	RA20LASB103A	5905-00-577-3656	5 6
81349	RA20LASB502A	5905-00-577-7341	5 14
81349	RCR20G2R7JS		14 14
81349	RCR20G224JS	5905-00-114-5393	14 21
			15 22
81349	RCR20G4R7JS	5905-00-126-6705	15 15
81349	RLR20C1000GR	5905-00-926-8706	14 30
			15 32
81349	RLR20C1001GR	5905-00-926-8708	14 18
			15 19
81349	RLR20C2201GR		15 23
81349	RLR20C3300GS	5905-01-130-8968	14 27
			15 31
81349	RLR20C3301GR		15 27
81349	RLR20C4700GR		14 19
81349	RLR20C51R0GR	5905-00-194-0481	14 20
			15 21
81349	RLR20C5600GR	5905-00-940-2751	14 24
81349	RLR20C6200GR		15 24
81349	RLR20C6800GR	5905-00-196-7213	14 28
			15 29
81349	RL42S272GTX	5905-01-058-7628	13 3
91637	RS500B22100F		13 15
81349	RW35V750	5905-00-894-0174	9 44
81349	RW38V8R2	5905-00-968-4890	10 10
81349	RW68V750	5905-00-975-1131	14 15
			15 16
80063	SM-A-640040		8 12
80063	SM-A-977598-215		2 35
80063	SM-A-977598-228		8 50
80063	SM-A-977598-232		9 30
80063	SM-A-977598-234		9 12
80063	SM-A-977598-285		9 14
80063	SM-A-977598-344		8 18
80063	SM-A-977599-2255		9 9
			11 36
80063	SM-A-977599-245		2 32
80063	SM-A-977599-265		8 52
80063	SM-A-977600-263		9 18
80063	SM-A-977600-268		5 34

NATIONAL STOCK NUMBER AND PART NUMBER INDEX

FSCM	PART NUMBER	PART NUMBER INDEX	
		STOCK NUMBER	FIG. ITEM
80063	SM-A-977601-303		11 21
80063	SM-A-977601-305		2 23
80063	SM-A-977602-100		2 24
			13 31
80063	SM-A-977602-97		2 33
80063	SM-A-977604		9 32
80063	SM-B-633302		8 3
80063	SM-B-633303		8 17
80063	SM-B-633304	5999-00-008-7479	8 19
80063	SM-B-633311		11 13
80063	SM-B-633313		13 12
80063	SM-B-633318		5 20
80063	SM-B-633321		8 27
80063	SM-B-633325		8 20
80063	SM-B-633326		5 9
80063	SM-B-633327		9 27
80063	SM-B-633329		4 2
80063	SM-B-63332-1		13 26
80063	SM-B-633332-2		13 30
80063	SM-B-633335		5 17
80063	SM-B-633339-1		12 19
80063	SM-B-633339-3		12 36
80063	SM-B-633340		12 5
80063	SM-B-633342		8 9
80063	SM-B-633346		11 11
80063	SM-B-633347		11 15
80063	SM-B-633351		5 8
80063	SM-B-633352		12 7
80063	SM-B-633358	5935-00-972-4003	15 33
80063	SM-B-633359		5 21
80063	SM-B-633360		5 1
80063	SM-B-633361	5970-00-009-0200	2 11
80063	SM-B-633362		2 12
80063	SM-B-633363		2 13
80063	SM-B-633364		13 19
80063	SM-B-633372		7 3
80063	SM-B-640005		8 3
80063	SM-B-640006		9 7
80063	SM-B-640007		9 29
80063	SM-B-640008		9 1
80063	SM-B-640009		8 6
80063	SM-B-640010		9 25
80063	SM-B-640011		8 17
80063	SM-B-640015		5 12
80063	SM-B-640017		10 4
80063	SM-B-640020		7 14
80063	SM-B-640021		7 18
80063	SM-B-640024		12 9
80063	SM-B-640025		11 8
80063	SM-B-640026		11 6
80063	SM-B-640027		11 7

NATIONAL STOCK NUMBER AND PART NUMBER INDEX

FSCM	PART NUMBER	PART NUMBER INDEX	
		STOCK NUMBER	FIG. ITEM
80063	SM-B-640028		11 13
80063	SM-B-640030		13 1
80063	SM-B-640031		13 17
80063	SM-B-640032		13 12
80063	SM-B-640035		8 26
80063	SM-B-640036		8 24
80063	SM-B-640041		10 17
80063	SM-B-640041-1		10 13
80063	SM-B-640042		1 6
80063	SM-B-640045		2 14
80063	SM-B-640048-1		9 2
80063	SM-B-640048-2		5 11
			13 2
80063	SM-B-640048-3		9 4
80063	SM-B-640050		8 22
80063	SM-B-640051		8 21
80063	SM-B-640053		15 35
80063	SM-B-640056		8 4
80063	SM-B-640058		12 31
80063	SM-B-640064		5 19
80063	SM-B-640065		9 36
80063	SM-B-640066		8 20
80063	SM-B-640069		5 16
80063	SM-B-640072		5 15
80063	SM-B-640074		9 31
80063	SM-B-640075		9 27
80063	SM-B-640077		10 3
80063	SM-B-640078		10 9
80063	SM-B-640079		9 41
80063	SM-B-640088		13 24
80063	SM-B-640089		12 23
			13 25
80063	SM-B-640090		12 22
			13 23
80063	SM-B-640091-1		13 22
80063	SM-B-640091-2		12 21
80063	SM-B-640101-1		12 19
80063	SM-B-640101-2		12 36
80063	SM-B-640102		12 24
80063	SM-B-640104		12 8
80063	SM-B-640106-2		10 6
80063	SM-B-640107	5995-00-008-7459	2 31
80063	SM-B-640113		4 8
80063	SM-B-640116		13 38
80063	SM-B-640117		8 12
80063	SM-B-640119		9 22
80063	SM-B-640120-1	5305-00-001-4872	9 26
			12 34
80063	SM-B-640120-2	5305-00-001-4873	7 15
80063	SM-B-640126		7 19
80063	SM-B-640127		7 1

NATIONAL STOCK NUMBER AND PART NUMBER INDEX

FSCM	PART NUMBER	PART NUMBER INDEX	
		STOCK NUMBER	FIG. ITEM
80063	SM-B-640128		7 6
80063	SM-B-640129-1		7 16
80063	SM-B-640129-2		7 17
80063	SM-B-640130		7 11
80063	SM-B-640134		3 2
80063	SM-B-640135	5820-00-179-3150	7 5
80063	SM-B-640136		10 5
80063	SM-B-640137		5 10
80063	SM-B-640137-3		13 21
80063	SM-B-640137-4		11 9
80063	SM-B-640138	5307-00-187-6421	13 41
80063	SM-B-640139	5307-00-187-6423	13 13
80063	SM-B-640140-1		8 2
			13 9
80063	SM-B-640140-2		8 7
80063	SM-B-640141		11 12
80063	SM-B-640142		11 11
80063	SM-B-640143		11 1
80063	SM-B-640144		11 14
80063	SM-B-640146-1		11 4
80063	SM-B-640146-2		11 16
80063	SM-B-640149		12 20
80063	SM-B-640154		9 42
80063	SM-B-640156		8 5
80063	SM-B-640158		2 15
80063	SM-B-640171		14 5
80063	SM-B-640177		1 8
80063	SM-B-640180		2 16
80063	SM-B-977603		12 14
80063	SM-B-977605		6 6
80063	SM-C-633306		1 10
80063	SM-C-633307		1 3
80063	SM-C-633309		11 10
80063	SM-C-633310		12 9
80063	SM-C-633312		11 3
80063	SM-C-633320		2 5
80063	SM-C-633330		4 3
80063	SM-C-633337		13 11
80063	SM-C-633365		9 47
80063	SM-C-633368		8 31
80063	SM-C-640002		1 4
80063	SM-C-640003	4140-01-169-1697	3 5
80063	SM-C-640016		1 10
80063	SM-C-640018		1 3
80063	SM-C-640019		6 3
80063	SM-C-640023		11 10
80063	SM-C-640029		11 3
80063	SM-C-640034		2 4
80063	SM-C-640038		11 5
80063	SM-C-640054		8 28
80063	SM-C-640057		8 29

NATIONAL STOCK NUMBER AND PART NUMBER INDEX

FSCM	PART NUMBER	PART NUMBER INDEX	
		STOCK NUMBER	FIG. ITEM
80063	SM-C-640067		1 7
80063	SM-C-640071		3 3
80063	SM-C-640082		4 6
80063	SM-C-640083-1		4 5
80063	SM-C-640083-2		4 7
80063	SM-C-640093		3 4
80063	SM-C-640099		13 11
80063	SM-C-640122		7 10
80063	SM-C-640123		7 7
80063	SM-C-640125		7 13
80063	SM-C-640155	5905-00-048-5165	2 2
80063	SM-D-633301		1 5
80063	SM-D-633305		1 2
80063	SM-D-633308		1 1
80063	SM-D-633314		11 5
80063	SM-D-633315		2 4
80063	SM-D-633316		8 26
80063	SM-D-633317		2 1
80063	SM-D-633319		4 9
80063	SM-D-633323		5 18
80063	SM-D-633324		8 1
80063	SM-D-633324-1		8 32
80063	SM-D-633328		10 2
80063	SM-D-633328-1		10 12
80063	SM-D-633331	5950-00-133-8953	13 4
80063	SM-D-633333		6 1
80063	SM-D-633333-1		6 7
80063	SM-D-633336		15 34
80063	SM-D-633338		11 2
80063	SM-D-633343		8 25
80063	SM-D-633353	5820-00-179-3149	2 10
80063	SM-D-640004		1 5
80063	SM-D-640013		1 2
80063	SM-D-640014		5 8
			5 14
80063	SM-D-640022		1 1
80063	SM-D-640033		2 1
80063	SM-D-640037	5995-01-147-4605	7 2
80063	SM-D-640047		3 1
80063	SM-D-640047-1		3 6
80063	SM-D-640049		2 5
80063	SM-D-640063		8 1
80063	SM-D-640068-1		12 1
80063	SM-D-640068-2		12 3
80063	SM-D-640076		10 2
80063	SM-D-640086	5950-00-246-4524	13 4
80063	SM-D-640092		6 1
80063	SM-D-640100	5950-00-133-8940	11 2
80063	SM-D-640124		7 4
80063	SM-D-640145		11 15
80063	SM-D-640157		1 9

NATIONAL STOCK NUMBER AND PART NUMBER INDEX

FSCM	PART NUMBER	PART NUMBER INDEX	
		STOCK NUMBER	FIG. ITEM
80063	SM-D-640159	5999-00-878-6660	2 10
06383	SSC2		2 3
06751	UZ720		14 10
44655	0400E	5905-00-100-4868	9 44
81349	1N4003		14 7
81349	1N937A		14 8
19200	10554157	5961-00-116-6553	14 11
81483	18DB2A	5961-00-410-5128	14 32
96733	18M2474DG	5910-00-878-8512	9 5
80131	2N2026		8 30
96791	261BP1K		14 29
73734	28220		2 30
04013	30-40	4920-00-420-9449	7 9
56699	3073GG101T063JPB	5910-00-534-7737	15 3
74545	3331	5935-00-849-4578	8 10
71468	60-6007-48-28		7 8
44655	6001		9 43
44655	6017	5970-00-281-0899	10 7
81861	6700-0282-0006		8 9
04946	703-28		8 16
80045	813360	5820-00-999-7292	15 36
63743	922N		9 37

By Order of the Secretary of the Army:

Official:

DONALD J. DELANDRO
Brigadier General United States Army
The Adjutant General

JOHN A. WICKMAN JR.
General United States Army
Chief of Staff

DISTRIBUTION:

To be distributed in accordance with DA Form 12-51, Direct and General Support Maintenance requirements for PP-4763/GRC.

RECOMMENDED CHANGES TO EQUIPMENT TECHNICAL PUBLICATIONS



THEN... JOT DOWN THE DOPE ABOUT IT ON THIS FORM. CAREFULLY TEAR IT OUT. FOLD IT AND DROP IT IN THE MAIL!

SOMETHING WRONG WITH THIS PUBLICATION?

FROM (PRINT YOUR UNIT'S COMPLETE ADDRESS)
 Commander
 Stateside Army Depot
 ATTN: AMSTA-US
 Stateside, N.J. 07703-5007

DATE SENT
 10 July 1975

PUBLICATION NUMBER TM 11-5840-340-20P	PUBLICATION DATE 23 Jan 78	PUBLICATION TITLE Radar Set AN/PRC-76
--	-------------------------------	--

BE EXACT PIN-POINT WHERE IT IS				IN THIS SPACE TELL WHAT IS WRONG AND WHAT SHOULD BE DONE ABOUT IT:
PAGE NO	PARA-GRAPH	FIGURE NO	TABLE NO	
33				For item 2, change the NSN to read: 5835-00-134-9186. Reason: Accuracy.
44		19		Identify the cover on the junction box (item no. 5). Reason: It is a separate item and is not called out on figure 19.
45				Add the cover of the junction box as an item in the listing for figure 19. Reason: Same as above

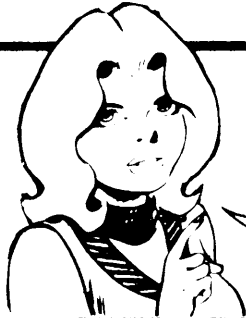
SAMPLE

TEAR ALONG PERFORATED LINE

PRINTED NAME, GRADE OR TITLE, AND TELEPHONE NUMBER
 SSG I. M. DeSpirit of 999-1776

SIGN HERE

RECOMMENDED CHANGES TO EQUIPMENT TECHNICAL PUBLICATIONS



THEN...JOT DOWN THE DOPE ABOUT IT ON THIS FORM. CAREFULLY TEAR IT OUT, FOLD IT AND DROP IT IN THE MAIL.

SOMETHING WRONG WITH THIS PUBLICATION?

FROM: (PRINT YOUR UNIT'S COMPLETE ADDRESS)

DATE SENT

PUBLICATION NUMBER: TM 11-5820-765-34P-1

PUBLICATION DATE: 5 MARCH 1985

PUBLICATION TITLE: Power Supplies PP-4763/GRC and PP-4763A/GRC

BE EXACT PIN-POINT WHERE IT IS				IN THIS SPACE TELL WHAT IS WRONG AND WHAT SHOULD BE DONE ABOUT IT:
PAGE NO.	PARA-GRAPH	FIGURE NO.	TABLE NO.	

TEAR ALONG PERFORATED LINE

PRINTED NAME GRADE OR TITLE AND TELEPHONE NUMBER

SIGN HERE

FILL IN YOUR
UNIT'S ADDRESS

FOLD BACK

DEPARTMENT OF THE ARMY

OFFICIAL BUSINESS

Commander
US Army Communications-Electronics Command
and Fort Monmouth
ATTN: AMSEL-ME-MP
Fort Monmouth, New Jersey 07703-5007

TEAR ALONG PERFORATED LINE

